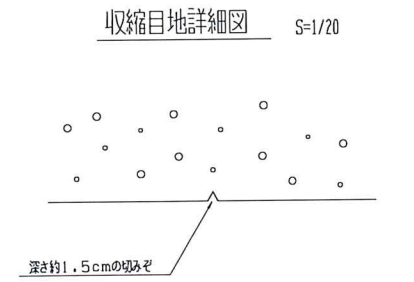
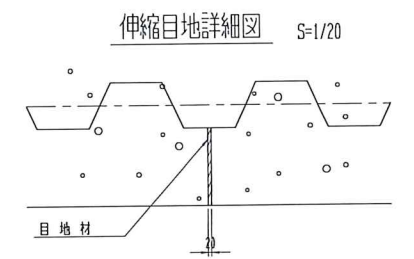
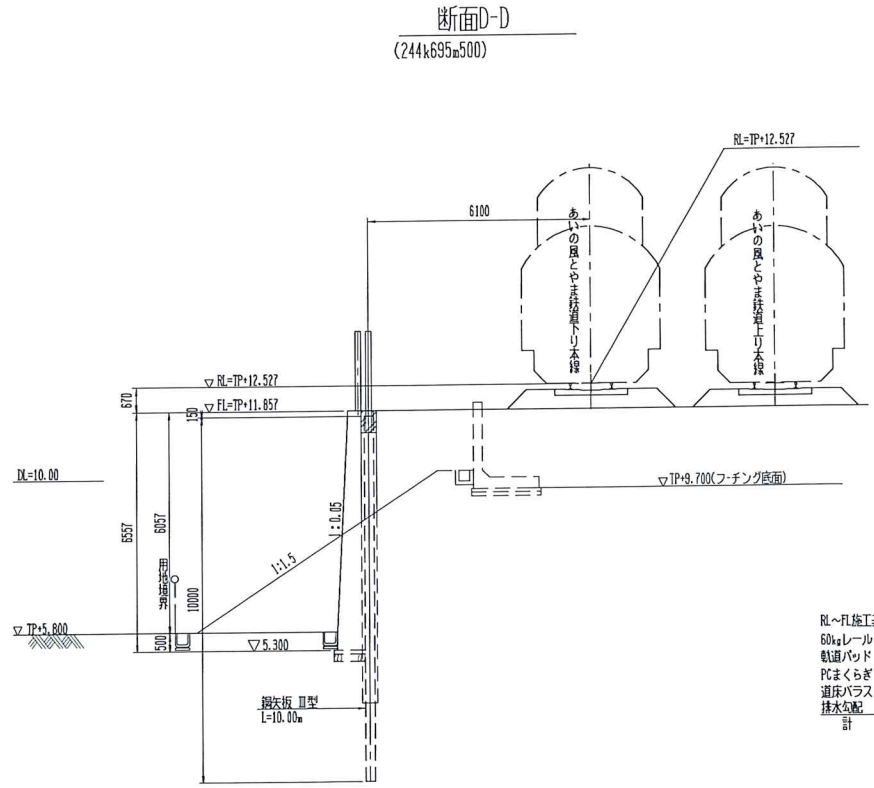
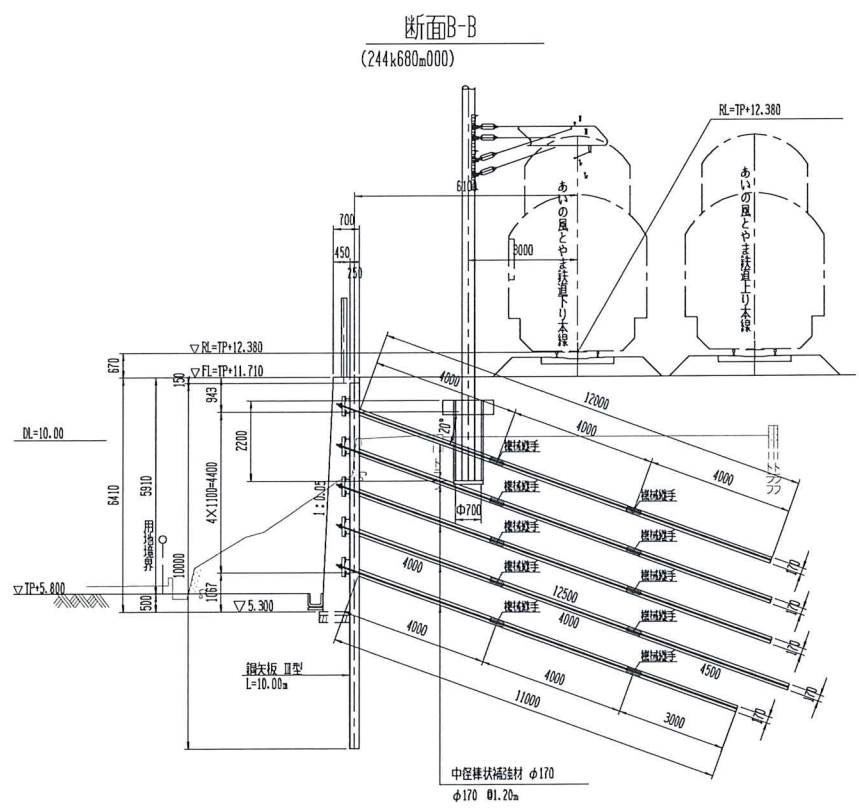
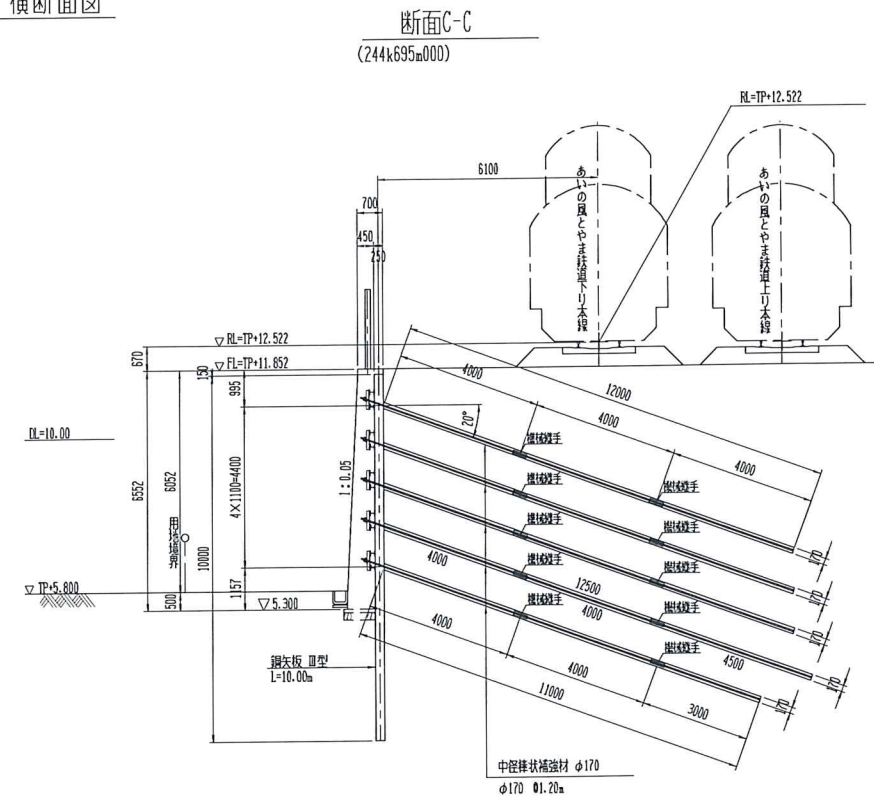
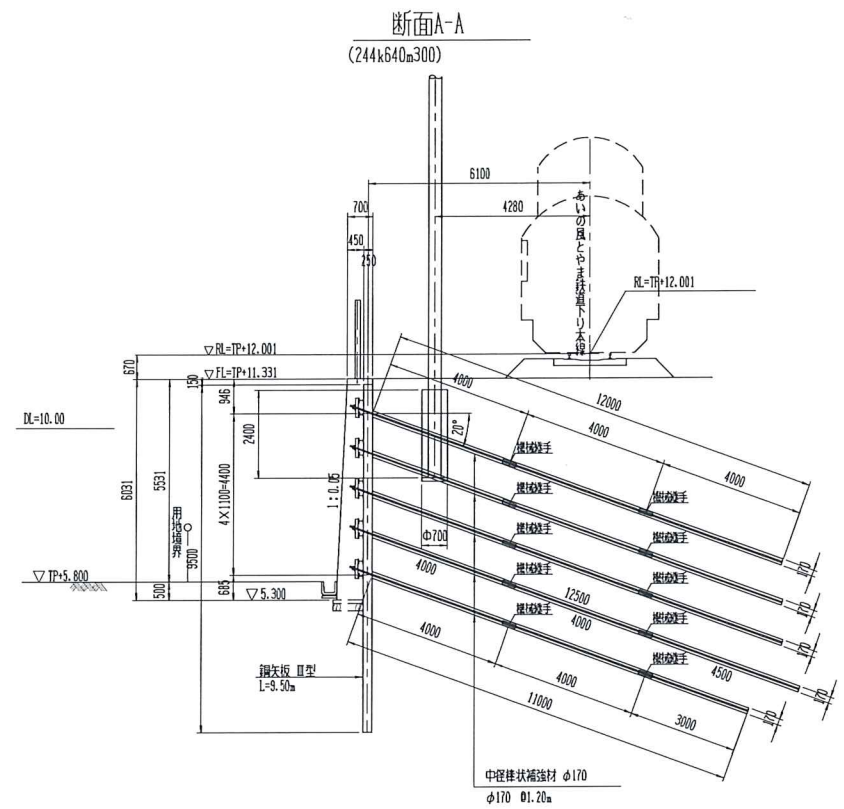


横断面図

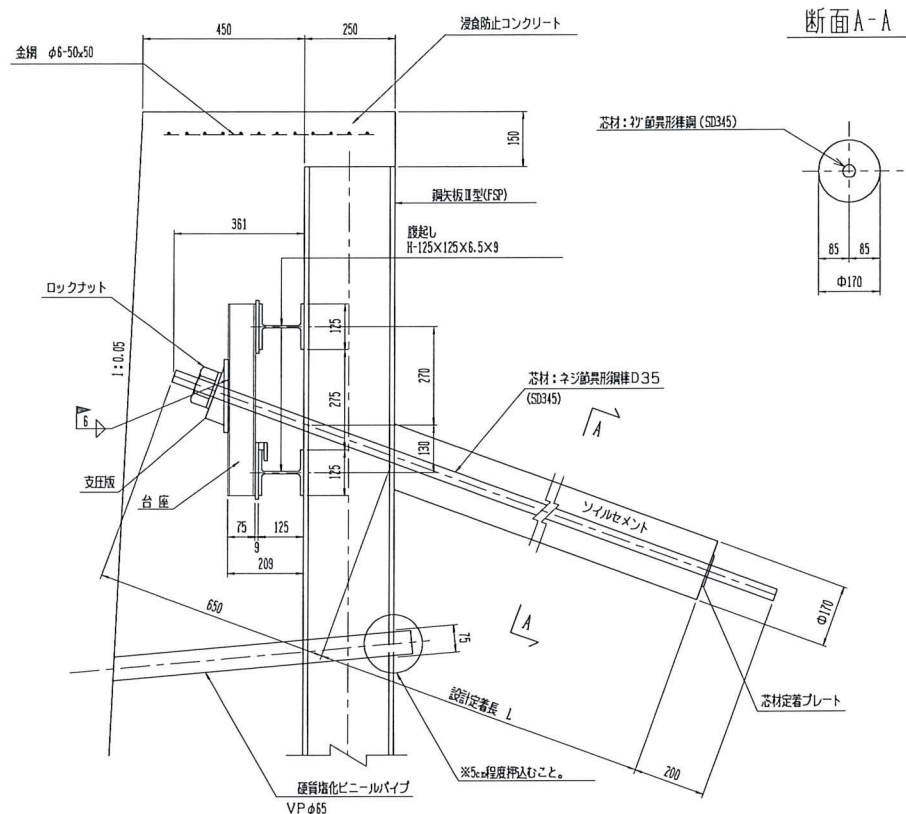


RL~凡仕工基面 (R=800以上)

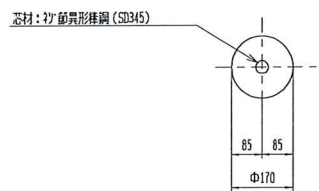
60g レール	174
軌道パッド	6
PCまくらぎ	150
道床バラスト	250
排水配	75
計	655mm
	→670mm

注) 該発目地25mmに1%所程度設ける。

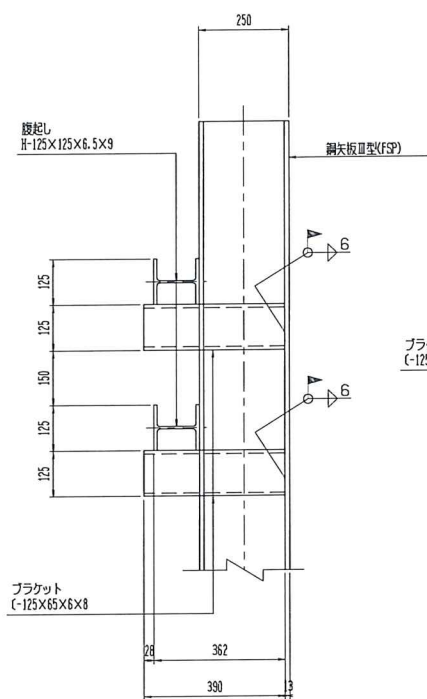
側面図



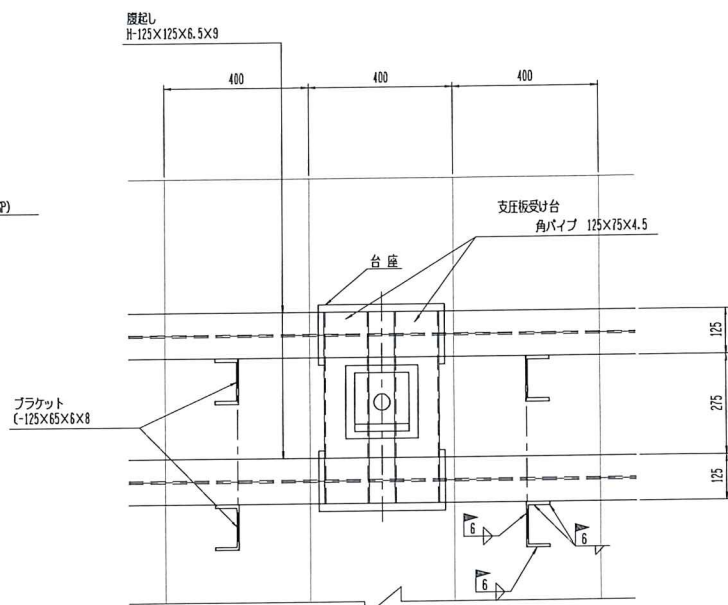
断面 A-A



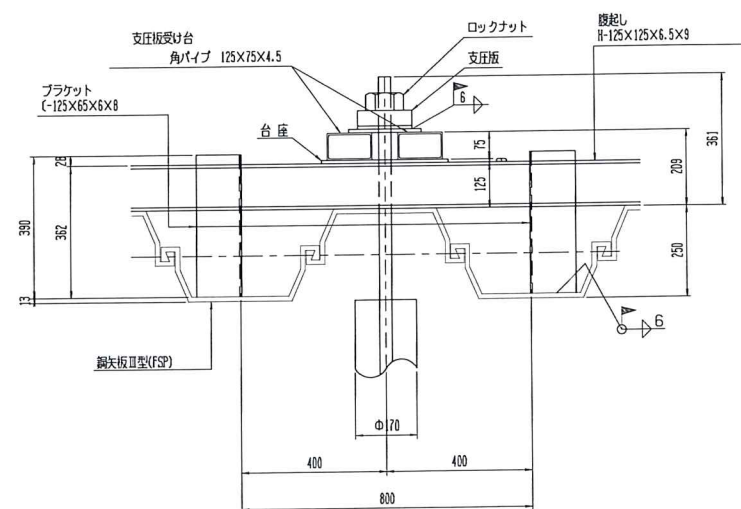
ブラケット部側面図



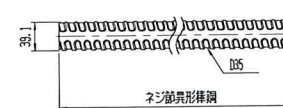
正面図



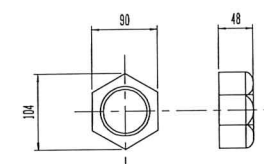
平面図



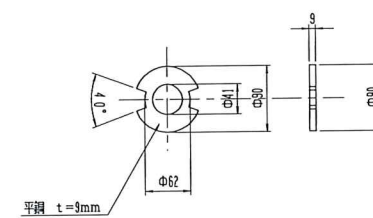
ネジ節異形棒鋼詳細図 S=1/5



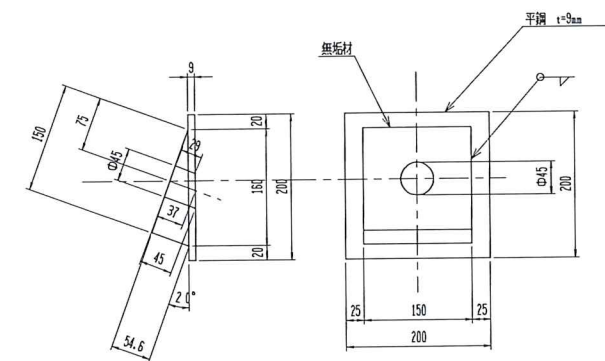
ロックナット詳細図 (頭部支圧板用) S=1/5



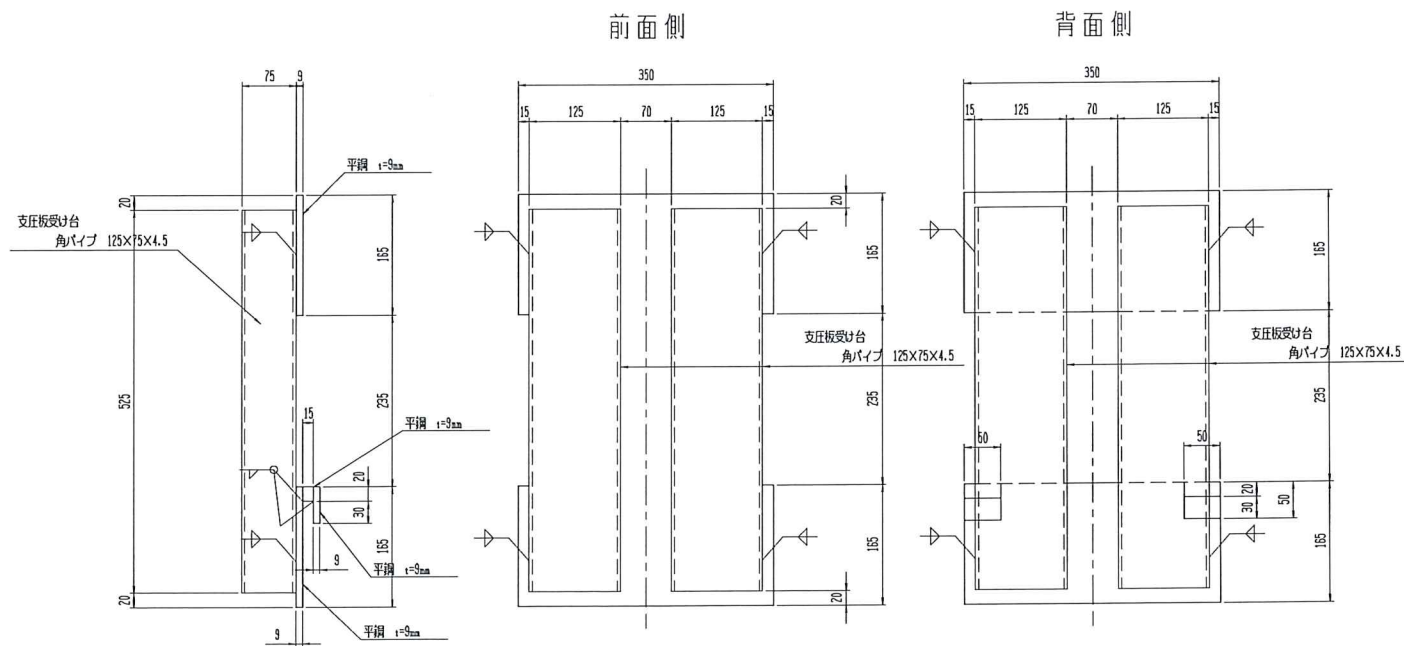
芯材先端プレート詳細図 S=1/5



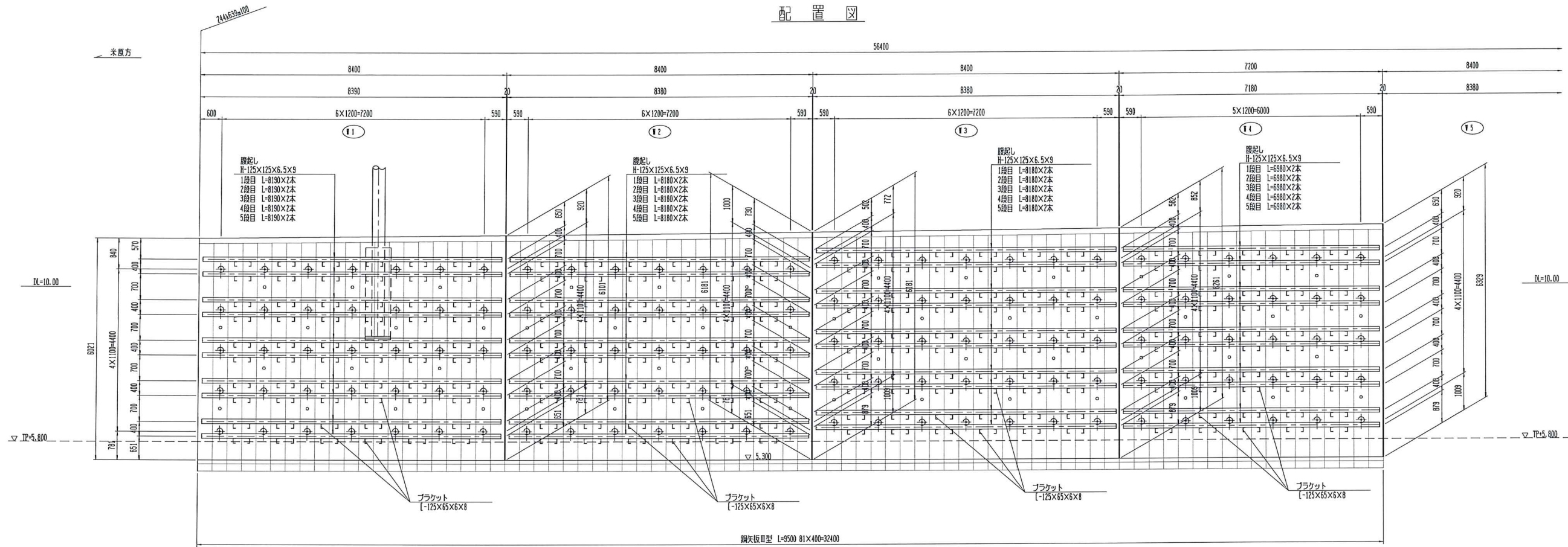
支圧板詳細図 S=1/5



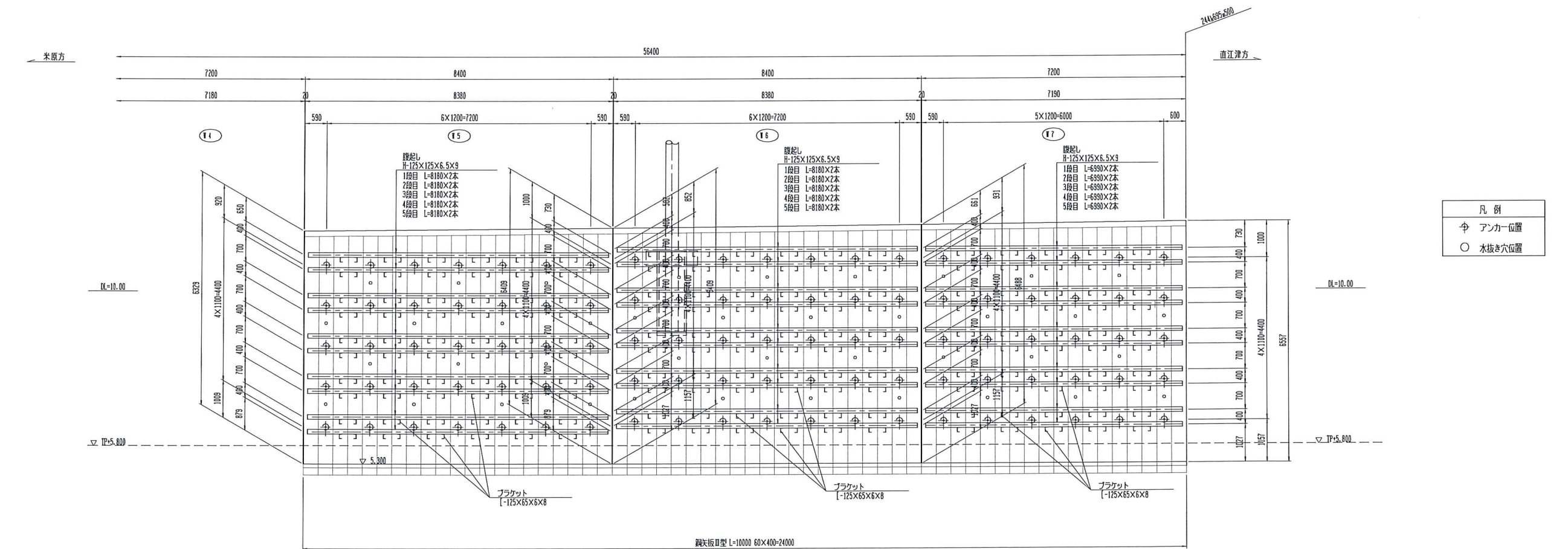
台座詳細図 S=1/5



配置図



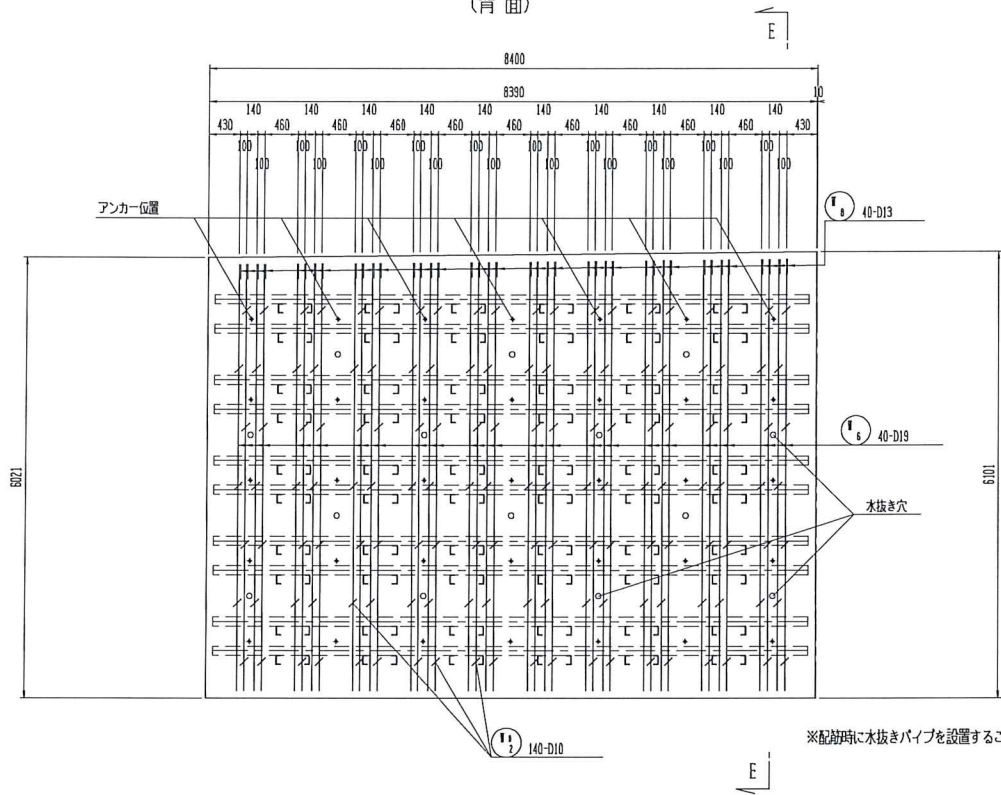
鋼甲板型 L=9500 81x400-32400



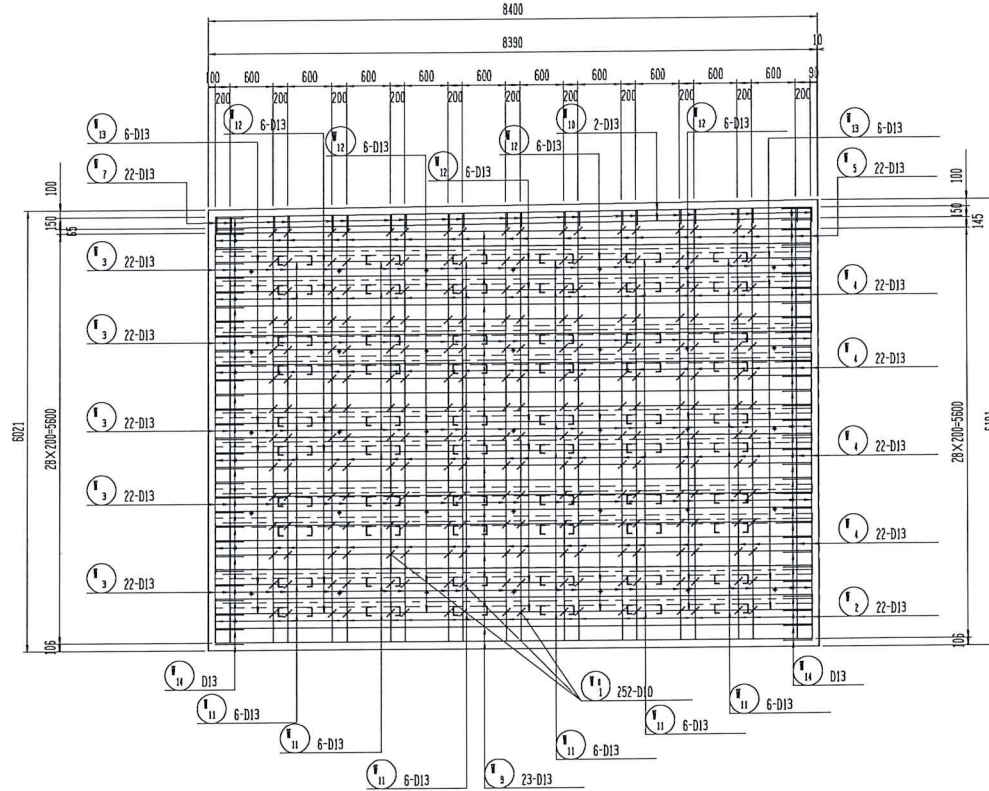
鋼甲板型 L=10000 60x400-24000

- 凡例
- ⊕ アンカー位置
 - 木抜き穴位置

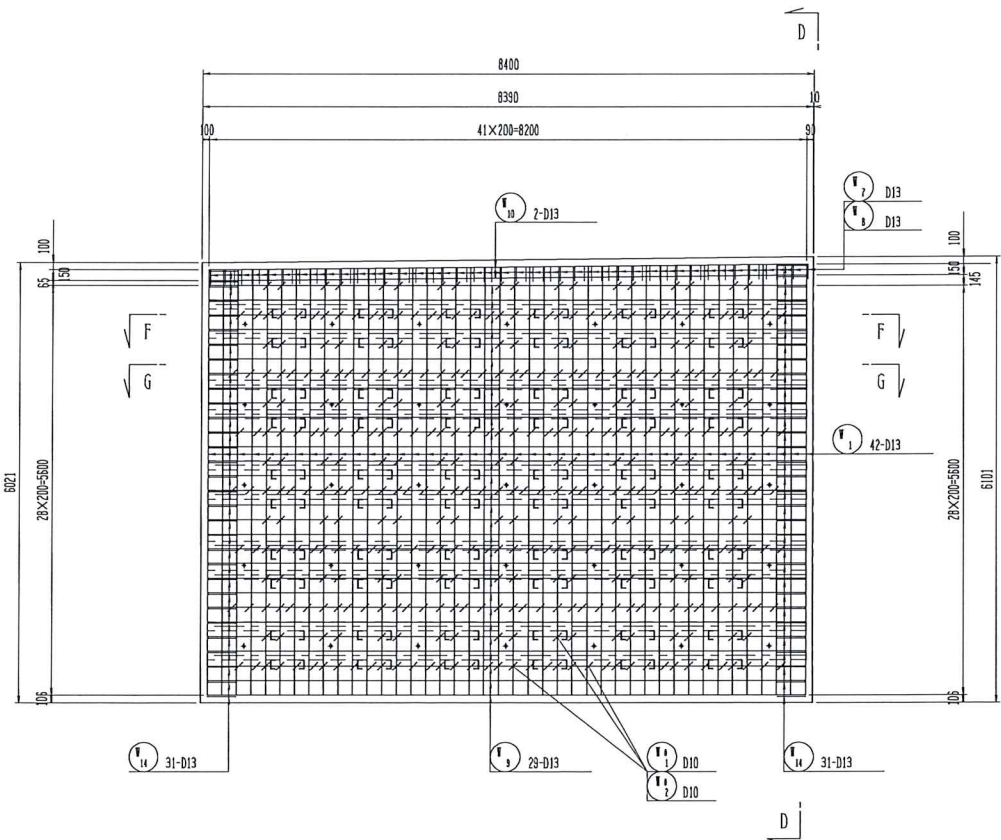
断面A-A
(背面)



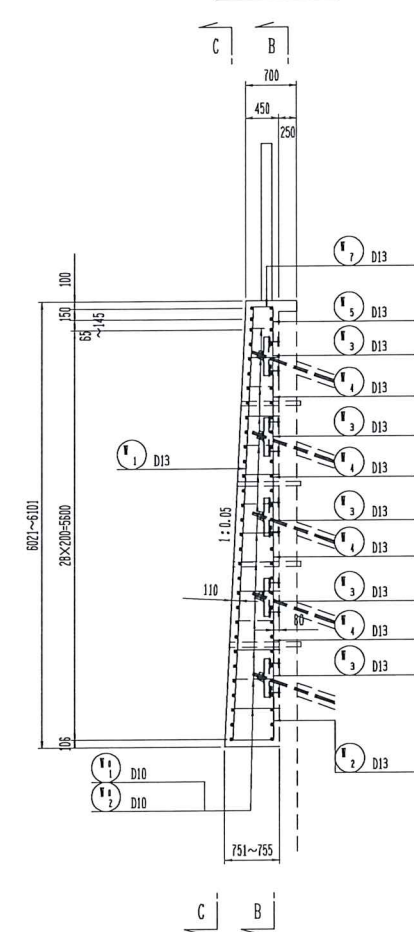
断面B-B
(背面)



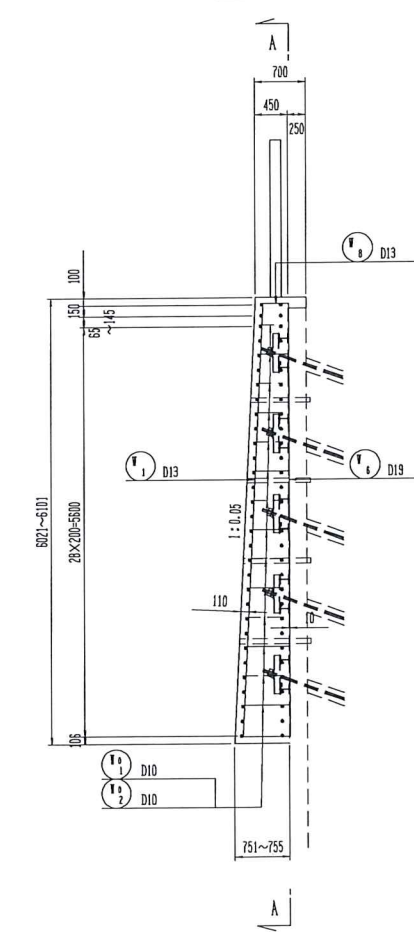
断面C-C
(前面)



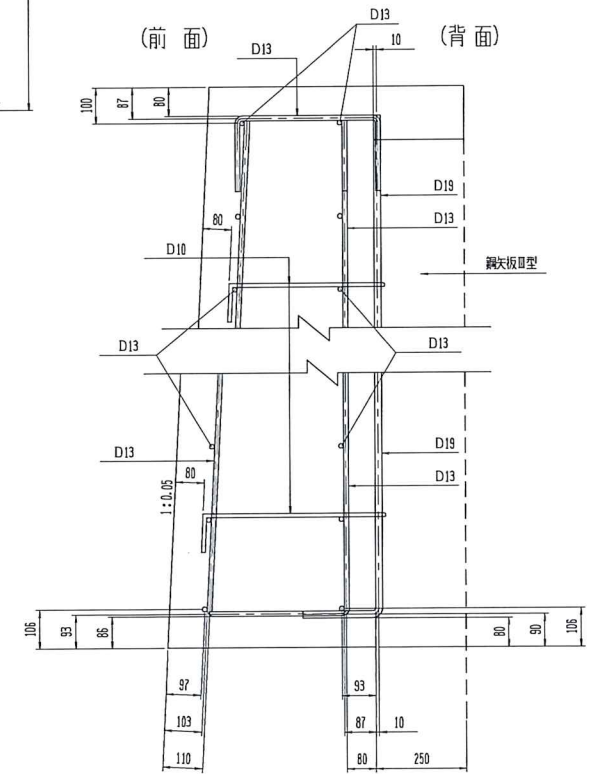
断面D-D

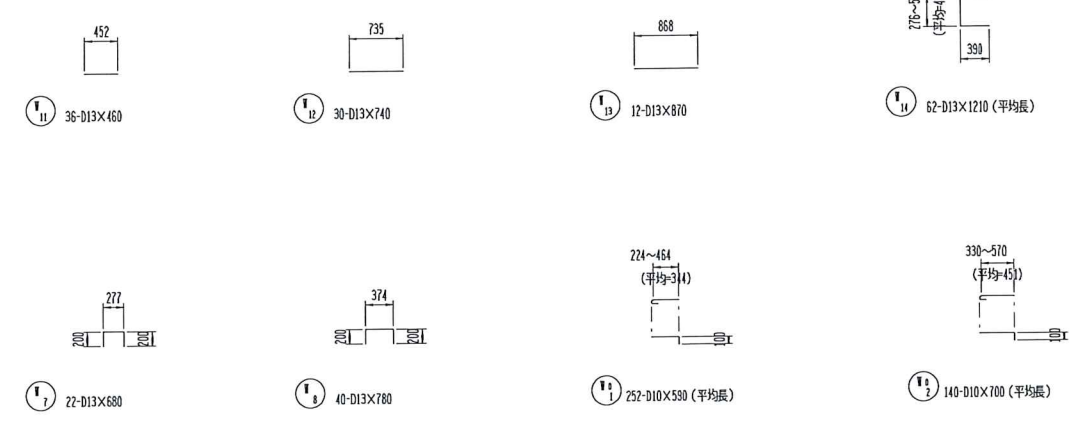
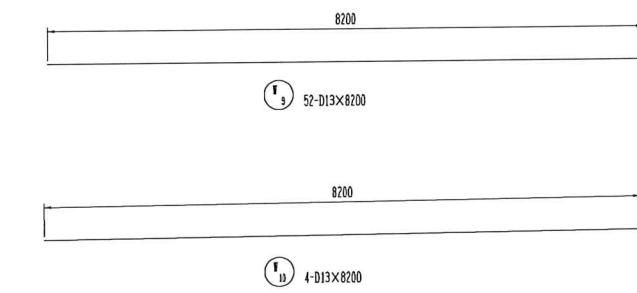
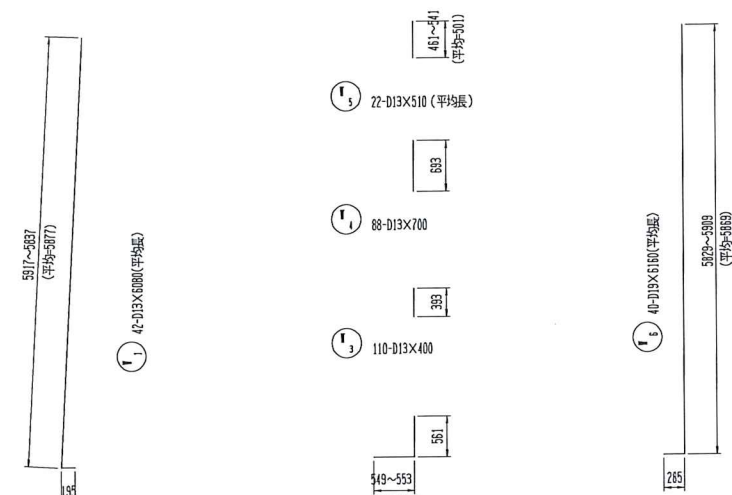
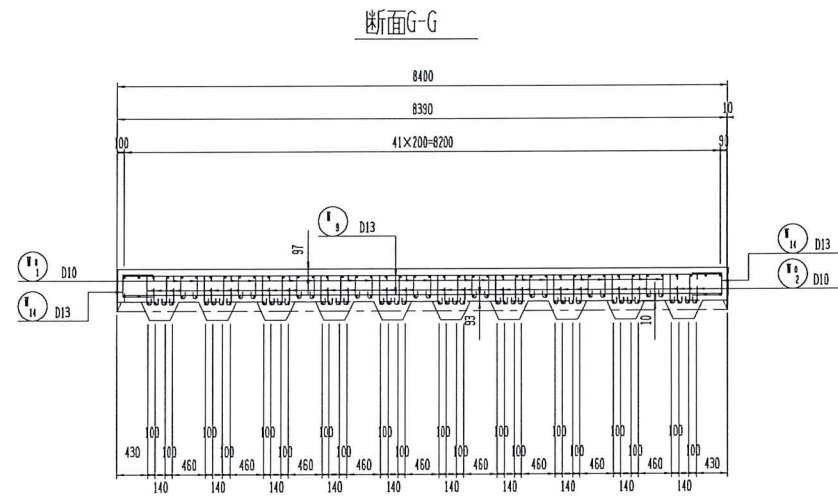
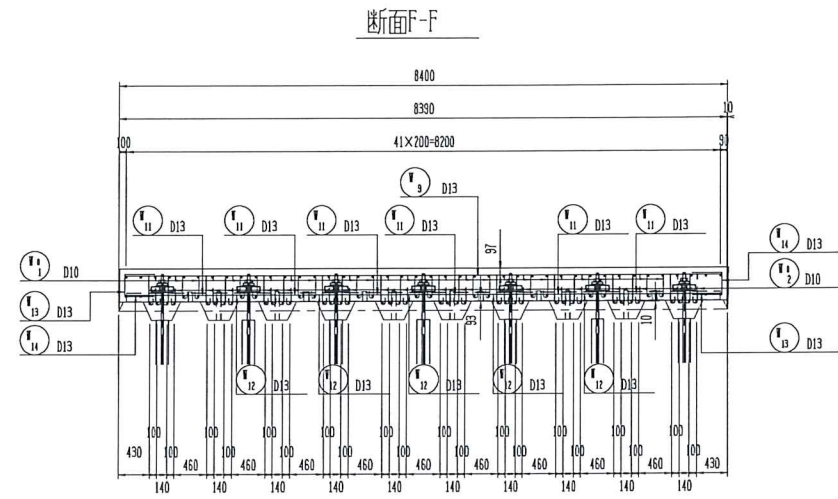


断面E-E



かぶり詳細図 S-1/10

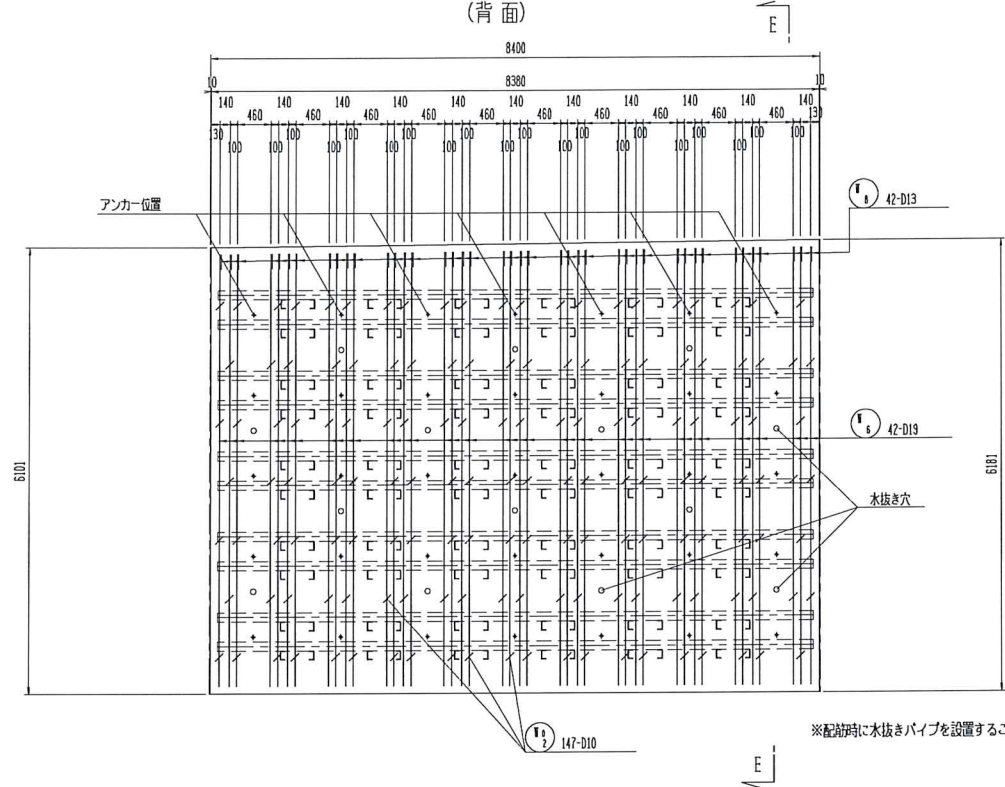




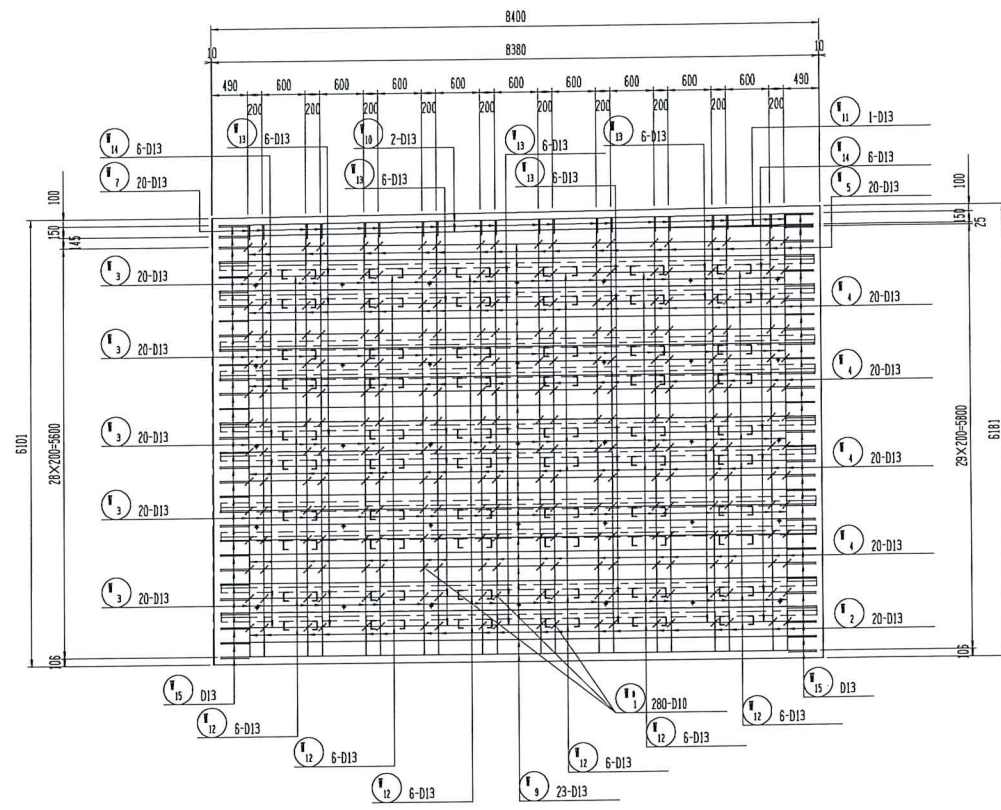
鉄筋表 (参考) 材質: SD345

符号	径	長さ (mm)	本数	1本当り質量(kg)	質量 (kg)	摘要
1	D13	6080	42	6.050	254.1	L (平均長)
2	D13	1120	22	1.114	24.5	L (平均長)
3	"	400	110	0.398	43.8	L
4	"	700	88	0.697	61.3	L
5	"	510	22	0.507	11.2	L (平均長)
6	D19	6160	40	13.860	554.4	L (平均長)
7	D13	680	22	0.677	14.9	L
8	"	780	40	0.765	31.0	L
9	"	8200	52	8.159	424.3	L
10	"	8200	4	8.159	32.6	L
11	"	460	36	0.458	16.5	L
12	"	740	30	0.736	22.1	L
13	"	870	12	0.856	10.4	L
14	"	1210	62	1.204	74.6	L (平均長)
15	D10	590	252	0.330	83.2	L (平均長)
16	"	700	140	0.392	54.9	L (平均長)
					D19	554.4 kg
					D13	1021.3 kg
					D10	138.1 kg
					合計	1713.8 kg

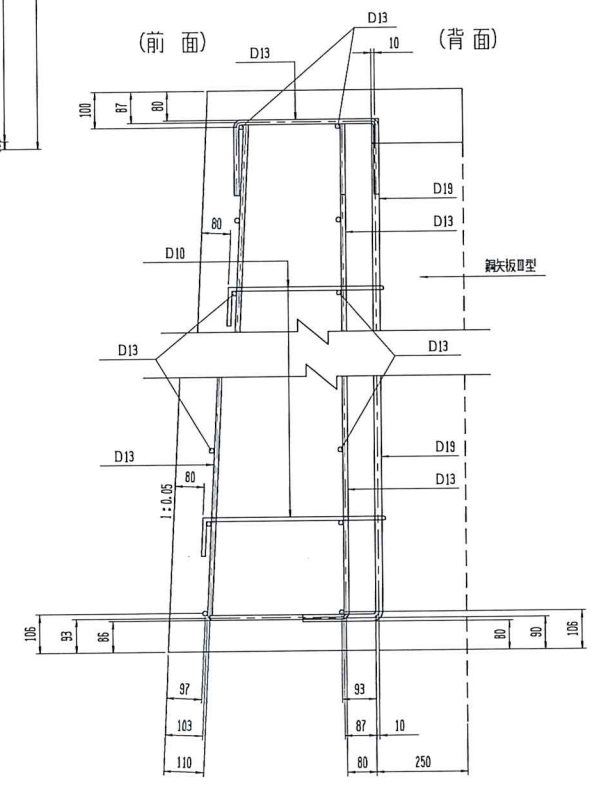
断面A-A
(背面)



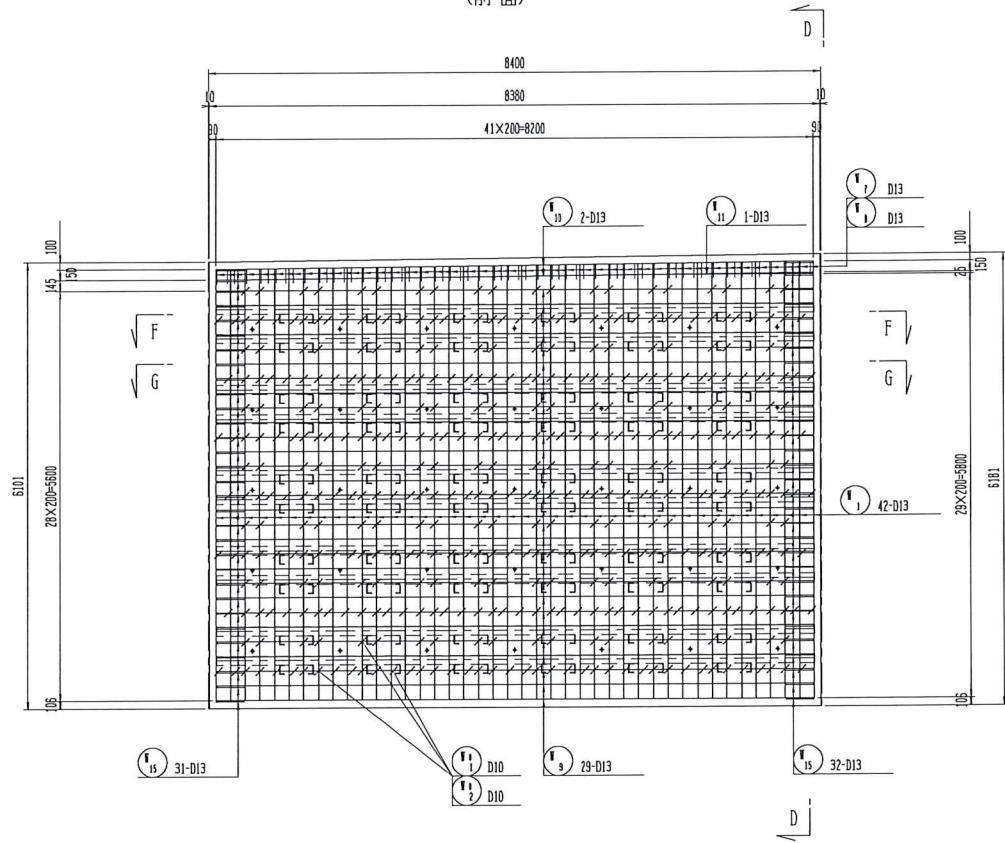
断面B-B
(背面)



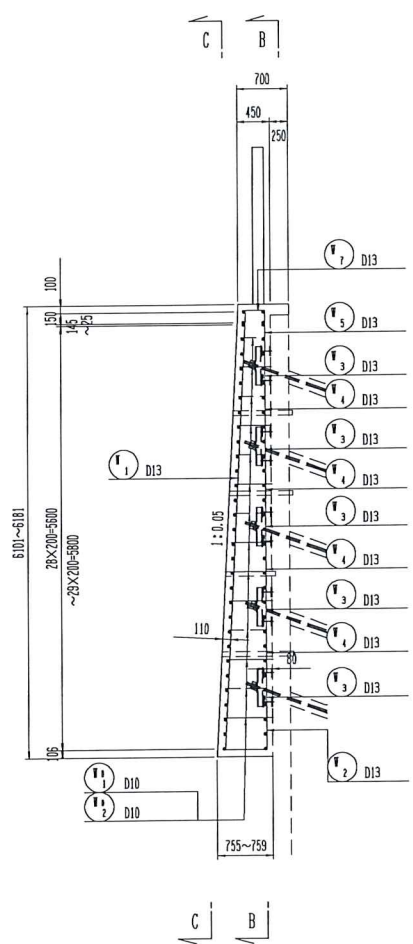
かぶり詳細図 S-1/10



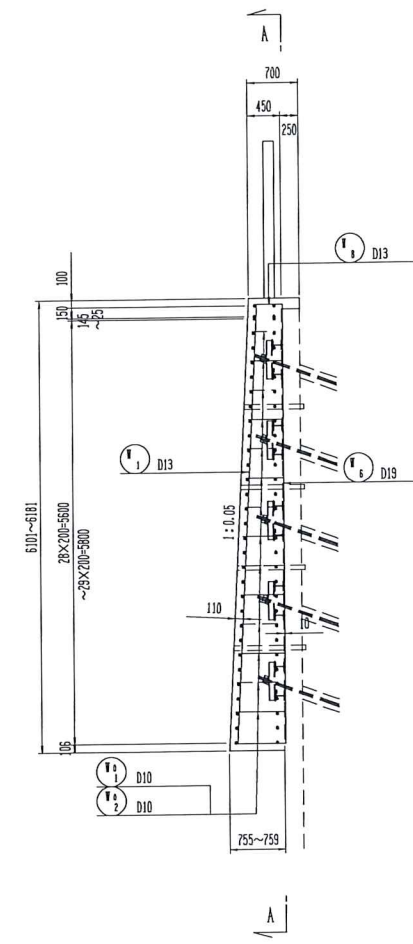
断面C-C
(前面)



断面D-D



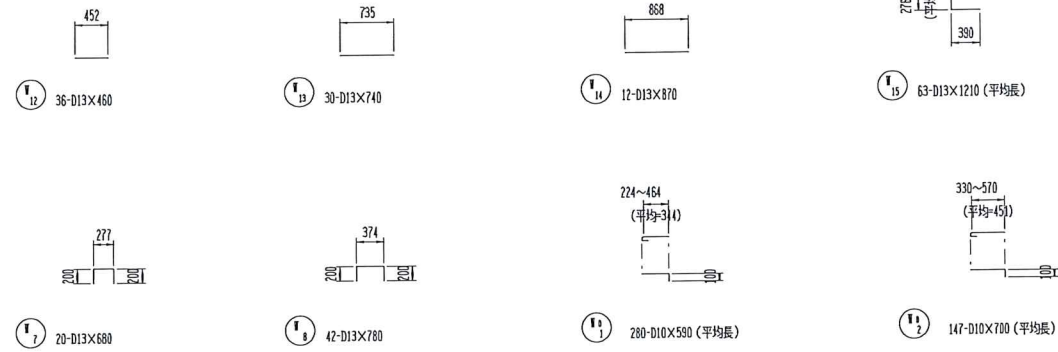
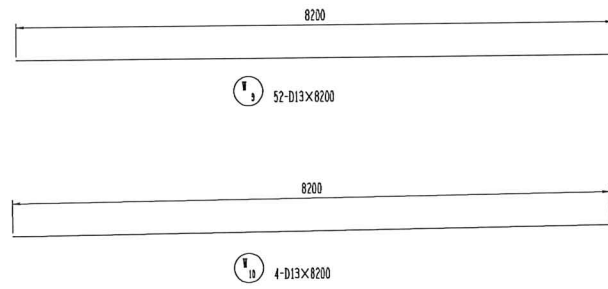
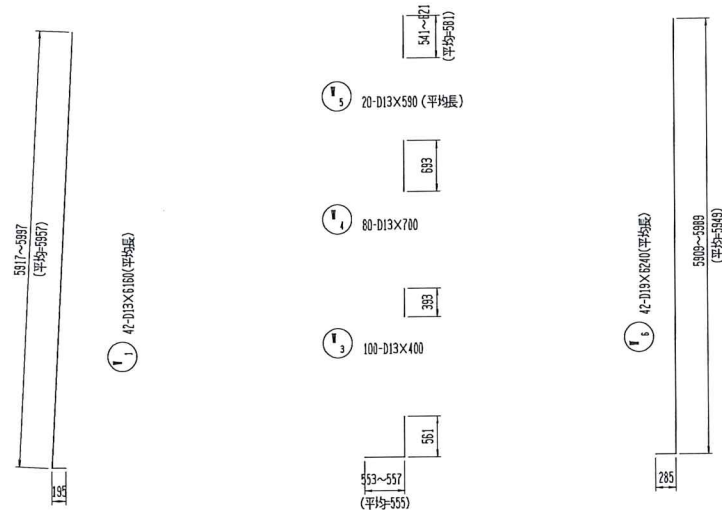
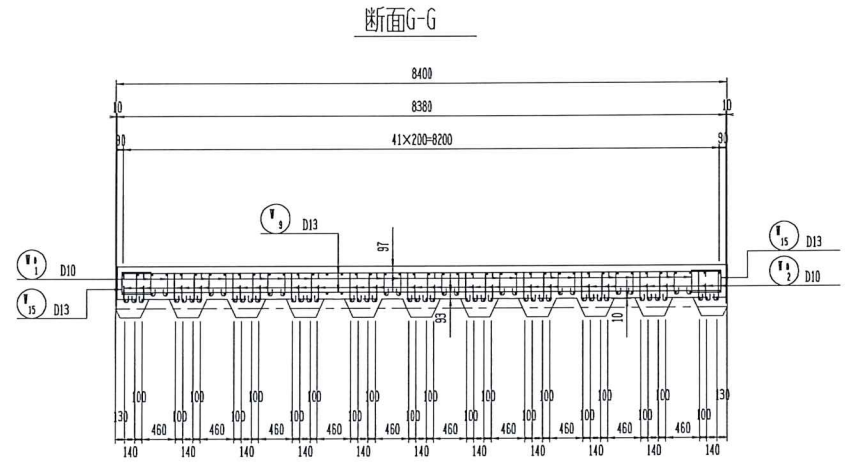
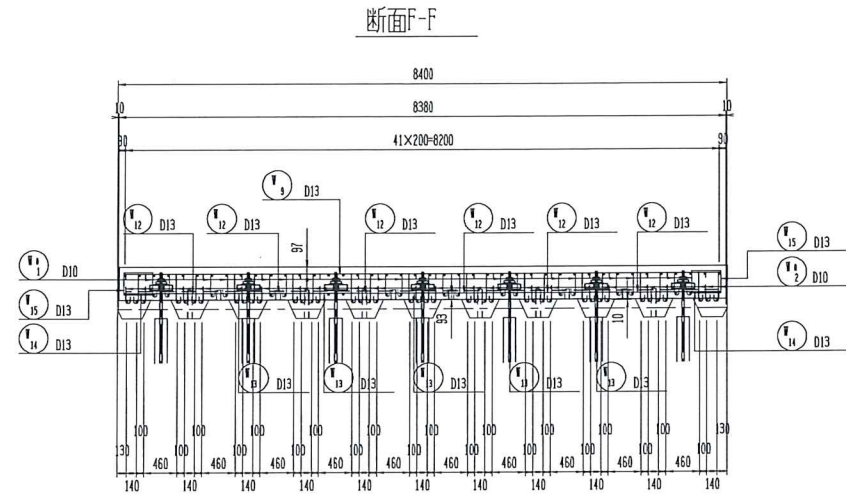
断面E-E



切土補強土擁壁 配筋図 (その4)

S-1/50

②

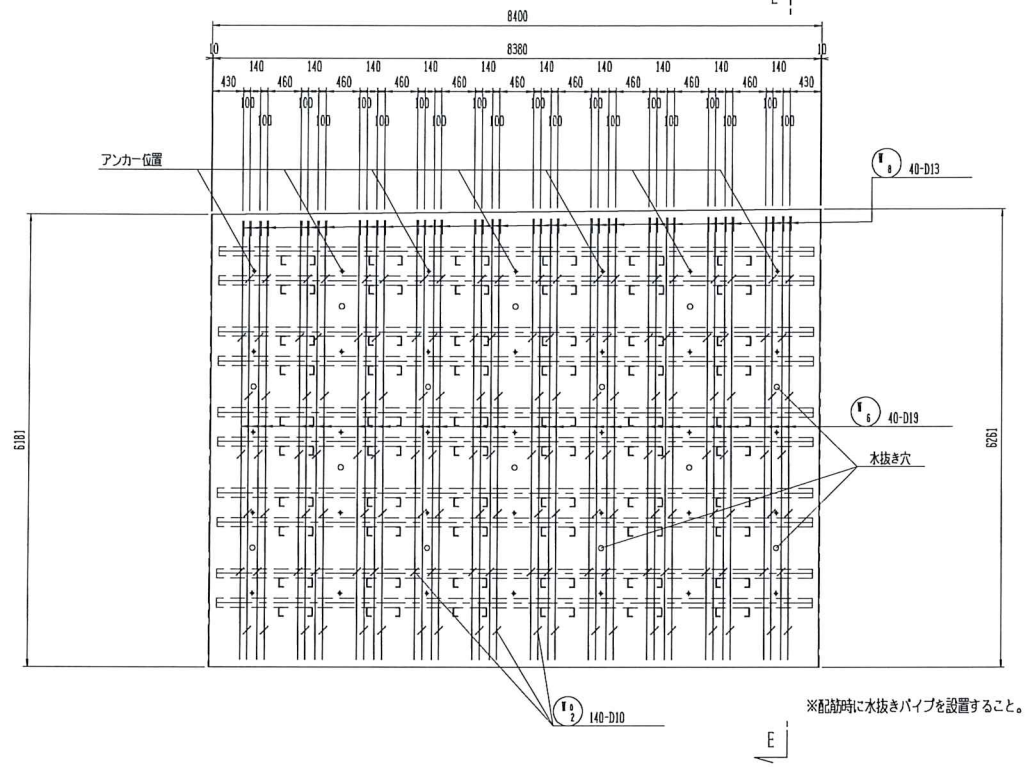


鉄筋表 (参考)

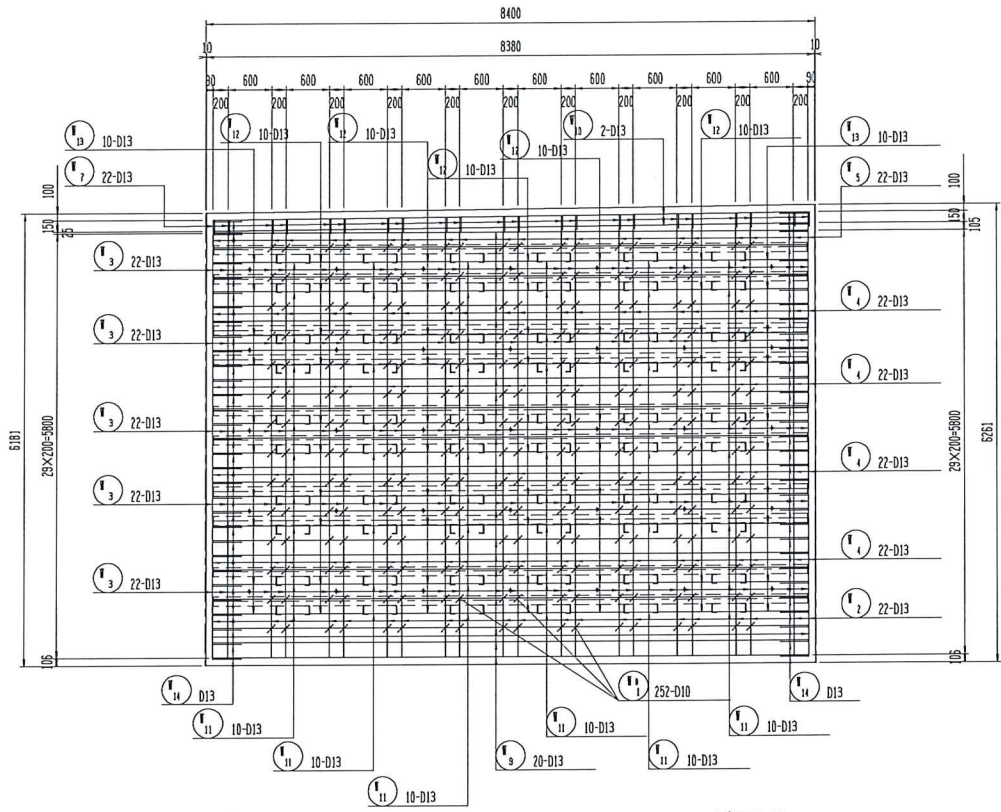
材質: SD345

符号	径	長さ (mm)	本数	1本当り質量(kg)	質量 (kg)	摘要
1	D13	6160	42	6.129	257.4	└ (平均長)
2	D13	1120	20	1.114	22.3	└ (平均長)
3	〃	400	100	0.398	39.8	└
4	〃	700	80	0.697	55.8	└
5	〃	580	20	0.587	11.7	└ (平均長)
6	D19	6240	42	14.849	589.7	└ (平均長)
7	D13	680	20	0.677	13.5	└
8	〃	780	42	0.765	32.6	└
9	〃	8200	52	8.159	424.3	└
10	〃	8200	4	8.159	32.6	└
11	〃	2630	2	2.167	5.2	└
12	〃	460	36	0.458	16.5	└
13	〃	740	30	0.736	22.1	└
14	〃	870	12	0.866	10.4	└
15	〃	1210	63	1.204	75.9	└ (平均長)
1	D10	580	280	0.330	92.4	└ (平均長)
2	〃	700	147	0.392	57.6	└ (平均長)
				D19	589.7	kg
				D13	1020.1	kg
				D10	150.0	kg
				合計	1759.8	kg

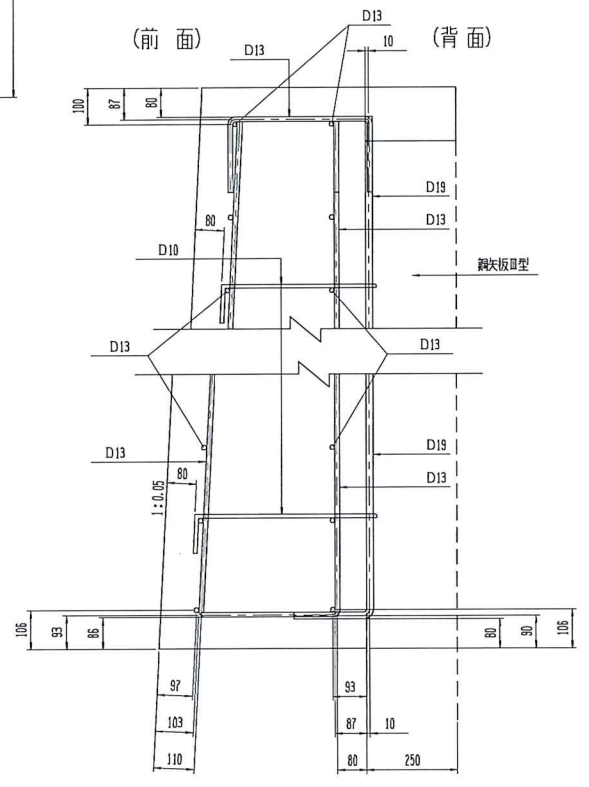
断面A-A
(背面)



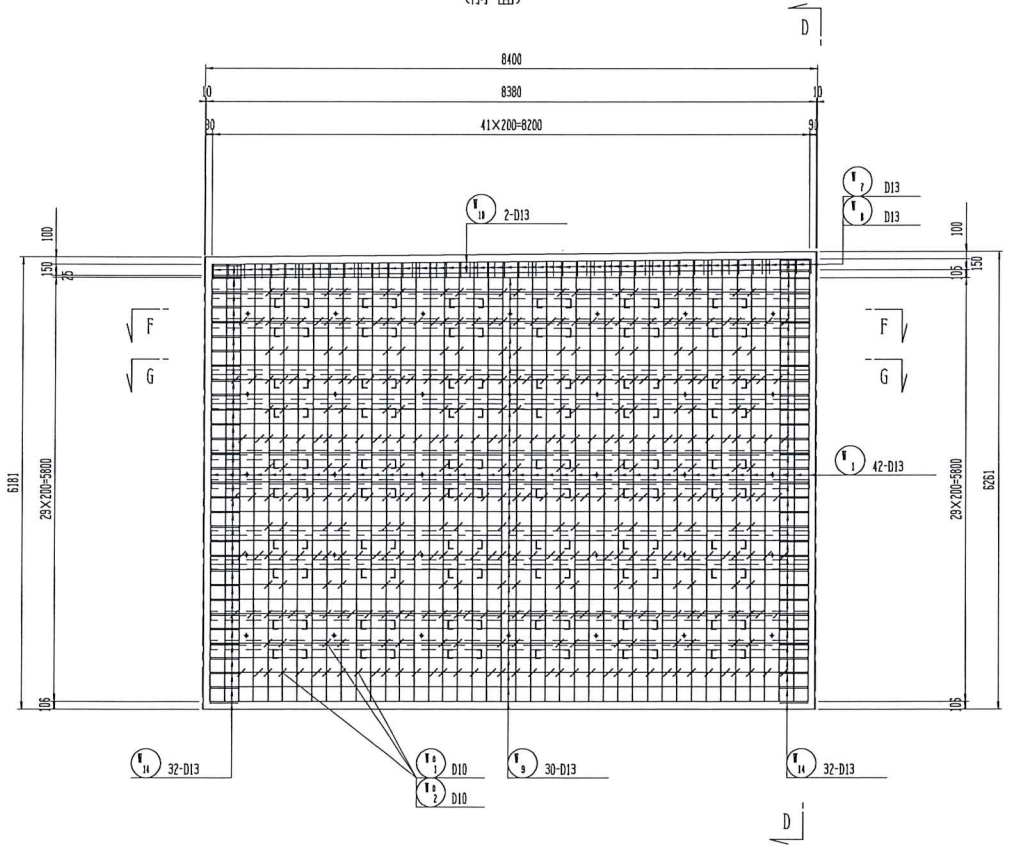
断面B-B
(背面)



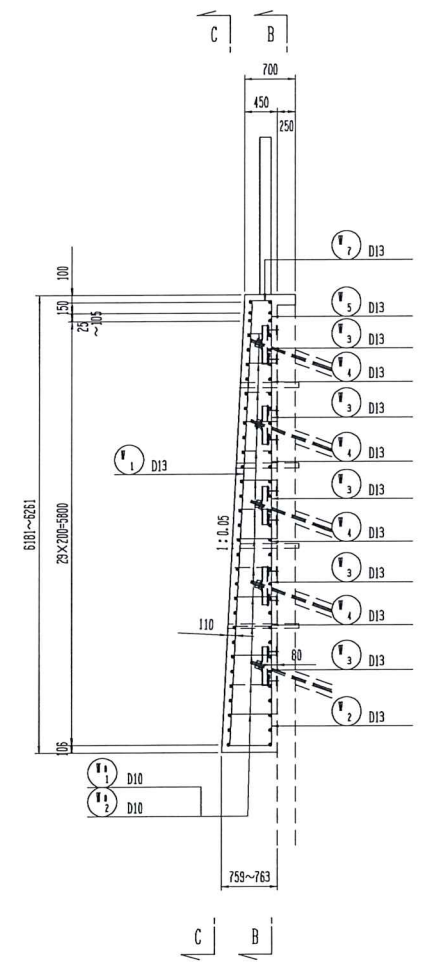
かぶり詳細図 S=1/10



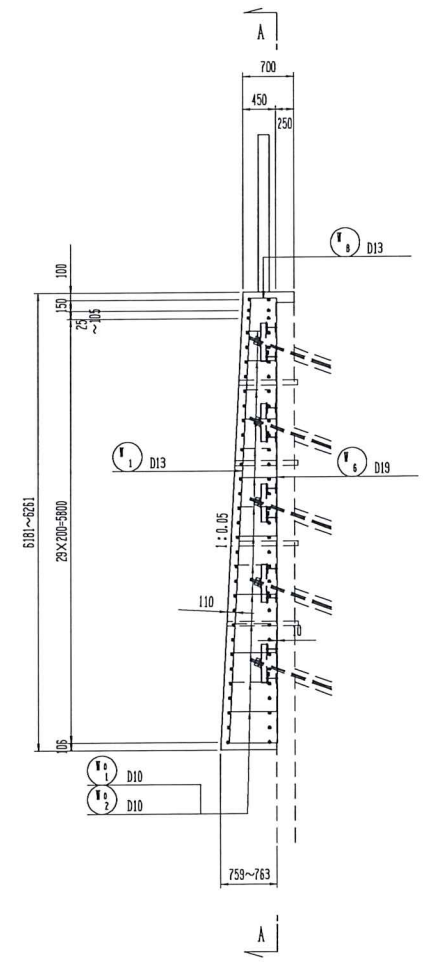
断面C-C
(前面)



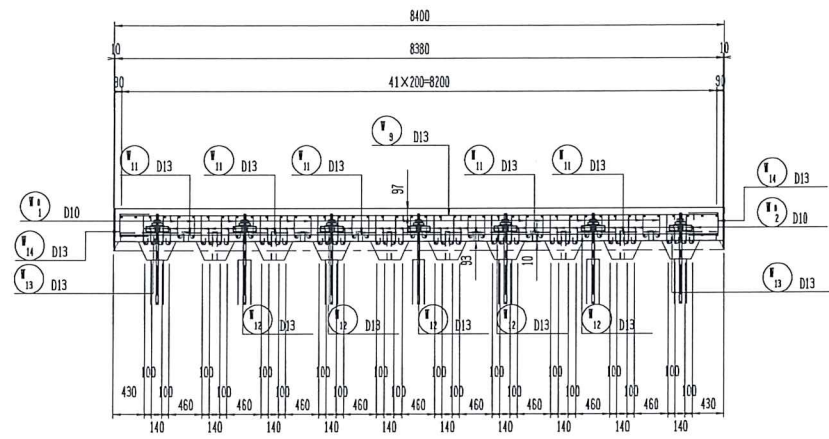
断面D-D



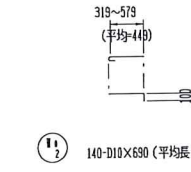
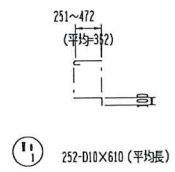
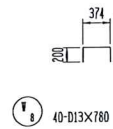
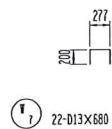
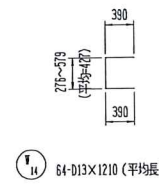
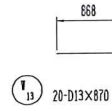
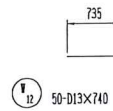
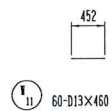
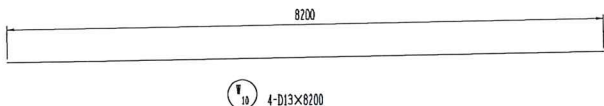
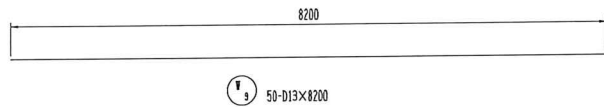
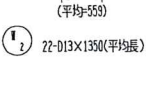
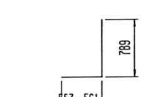
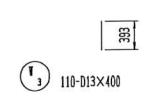
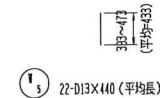
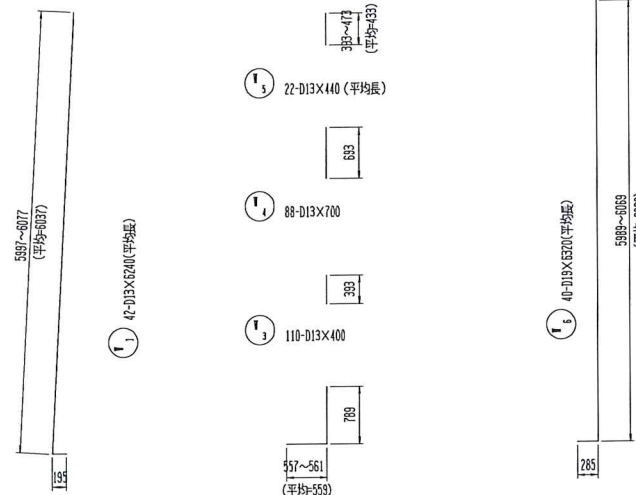
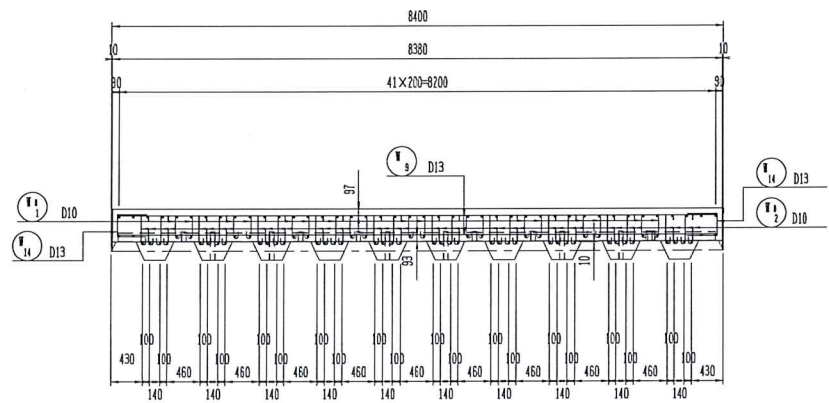
断面E-E



断面F-F



断面G-G

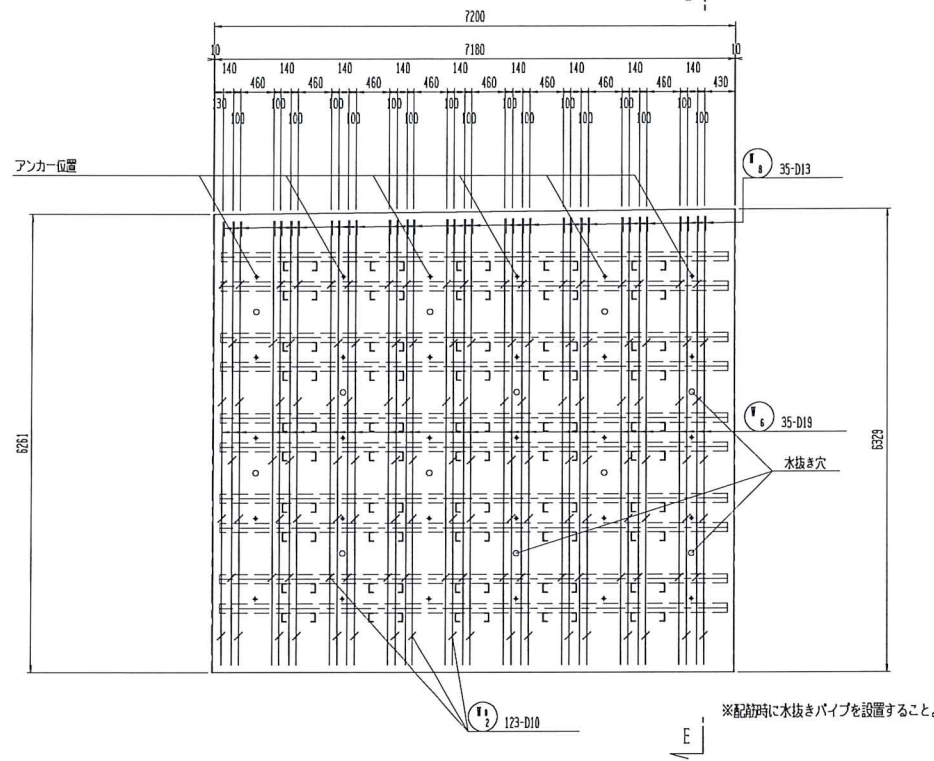


鉄筋表 (参考)

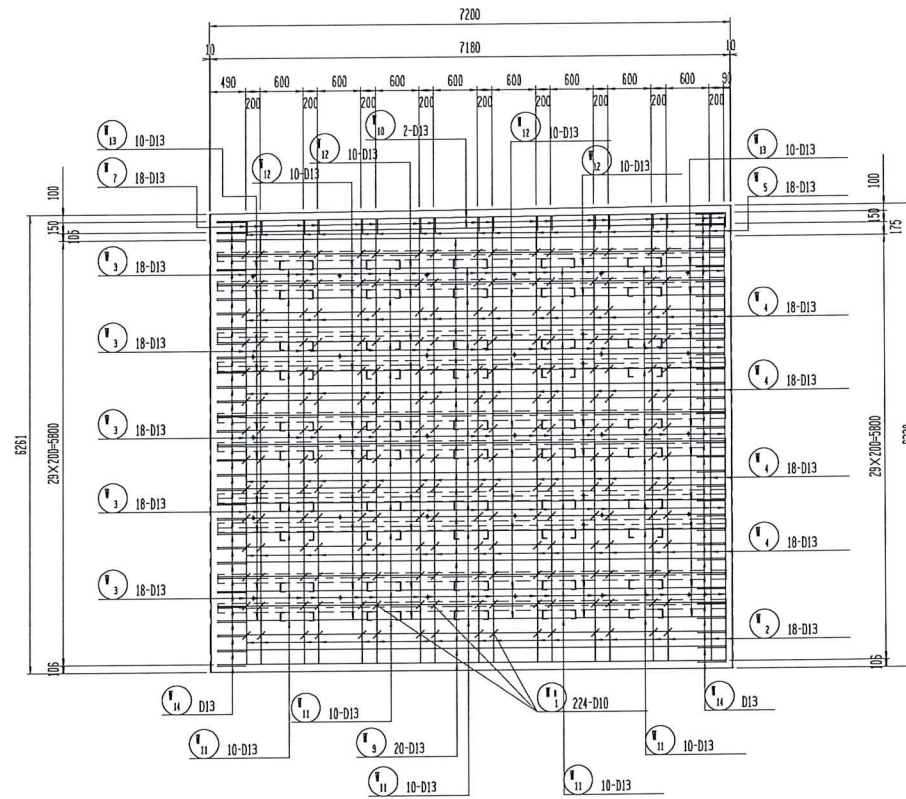
材質: SD345

符号	径	長さ (mm)	本数	1本当り質量 (kg)	質量 (kg)	摘要
1	D13	6240	42	6.209	260.8	└ (平均長)
2	〃	1350	22	1.343	29.5	└ (平均長)
3	〃	400	110	0.398	43.8	└
4	〃	700	88	0.697	61.3	└
5	〃	440	22	0.438	9.6	└ (平均長)
6	D19	6320	40	14.220	568.8	└ (平均長)
7	D13	680	22	0.677	14.9	└
8	〃	780	40	0.776	31.0	└
9	〃	8200	60	8.159	489.0	└
10	〃	8200	4	8.159	32.6	└
11	〃	450	50	0.458	22.9	└
12	〃	740	50	0.736	36.8	└
13	〃	870	20	0.866	17.3	└
14	〃	1210	84	1.204	101.1	└ (平均長)
1	D10	610	252	0.342	86.2	└ (平均長)
2	〃	690	140	0.366	51.2	└ (平均長)
				D19	568.8	kg
				D13	1050.2	kg
				D10	140.2	kg
				合計	1759.2	kg

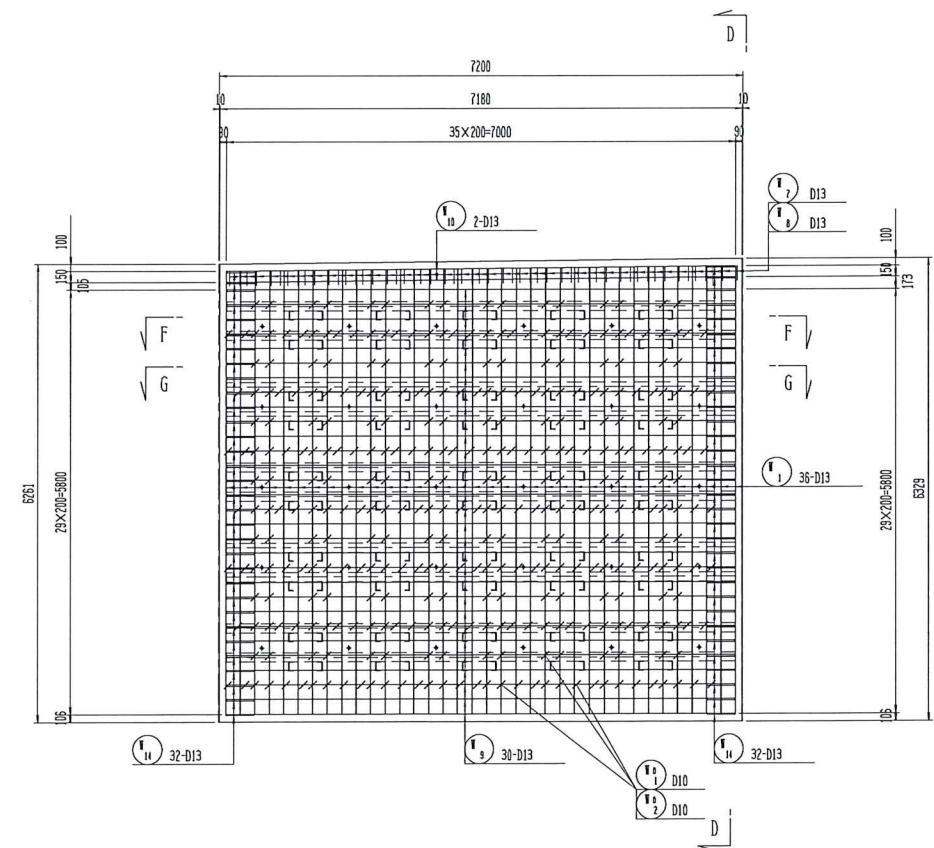
断面A-A
(背面)



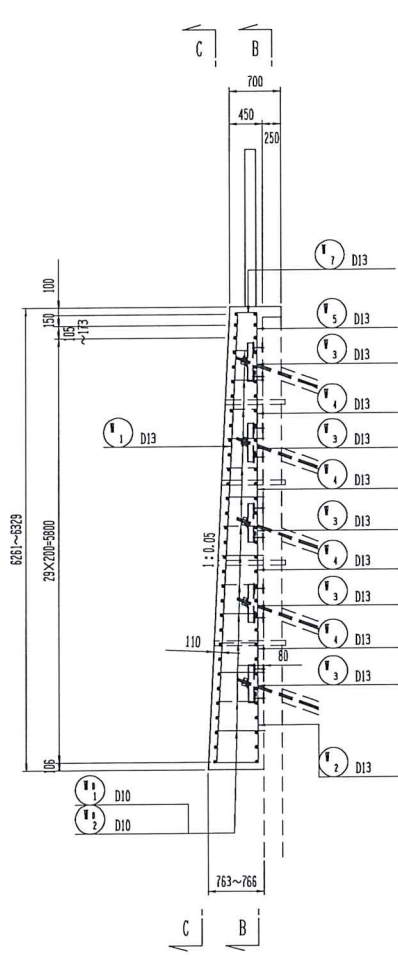
断面B-B
(背面)



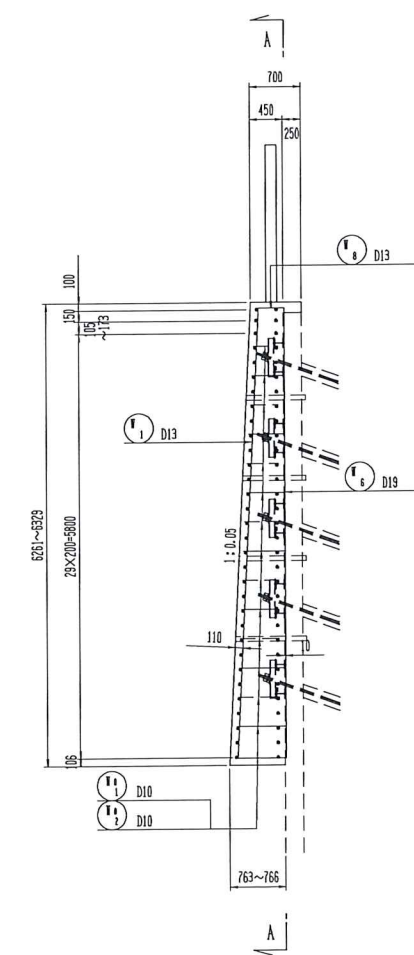
断面C-C
(前面)



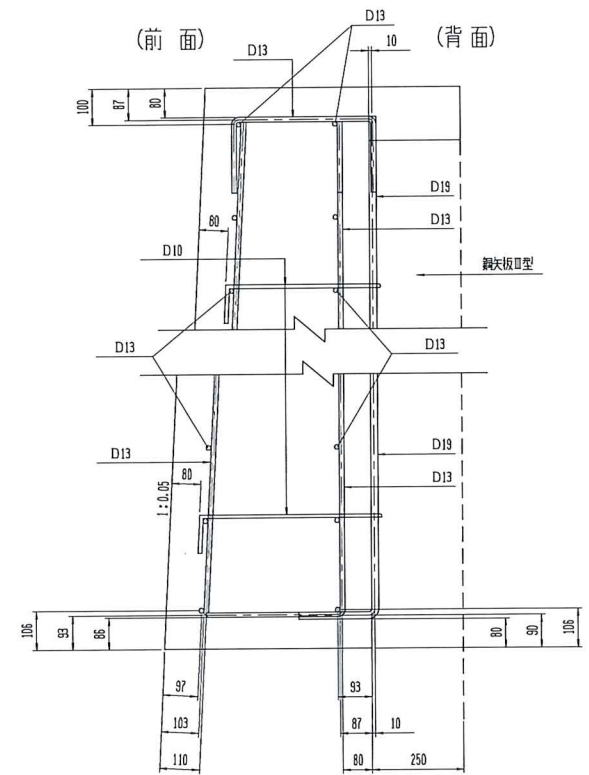
断面D-D

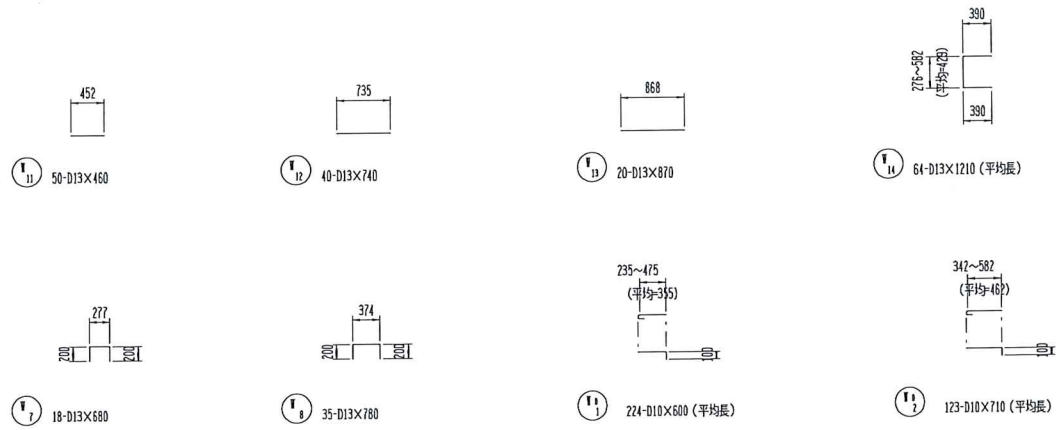
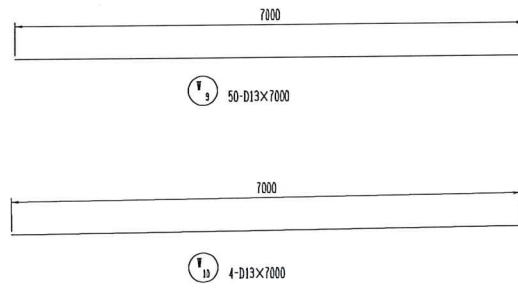
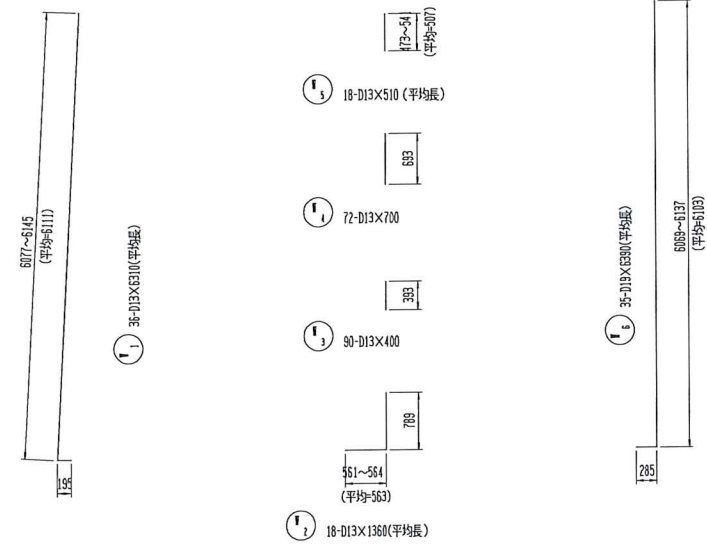
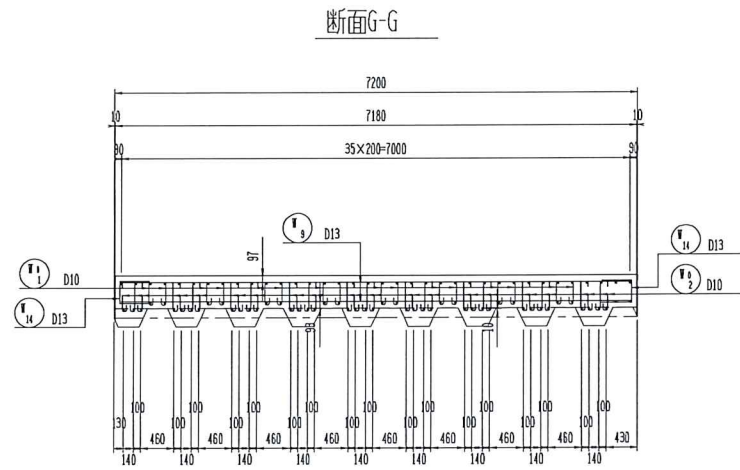
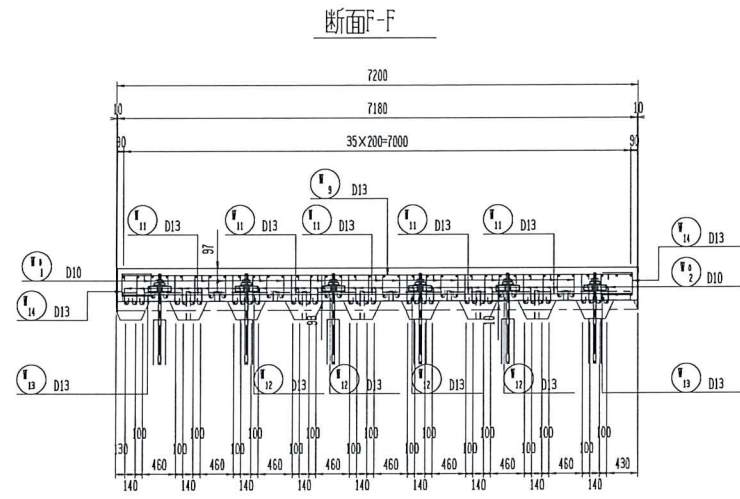


断面E-E



かぶり詳細図 S=1/10

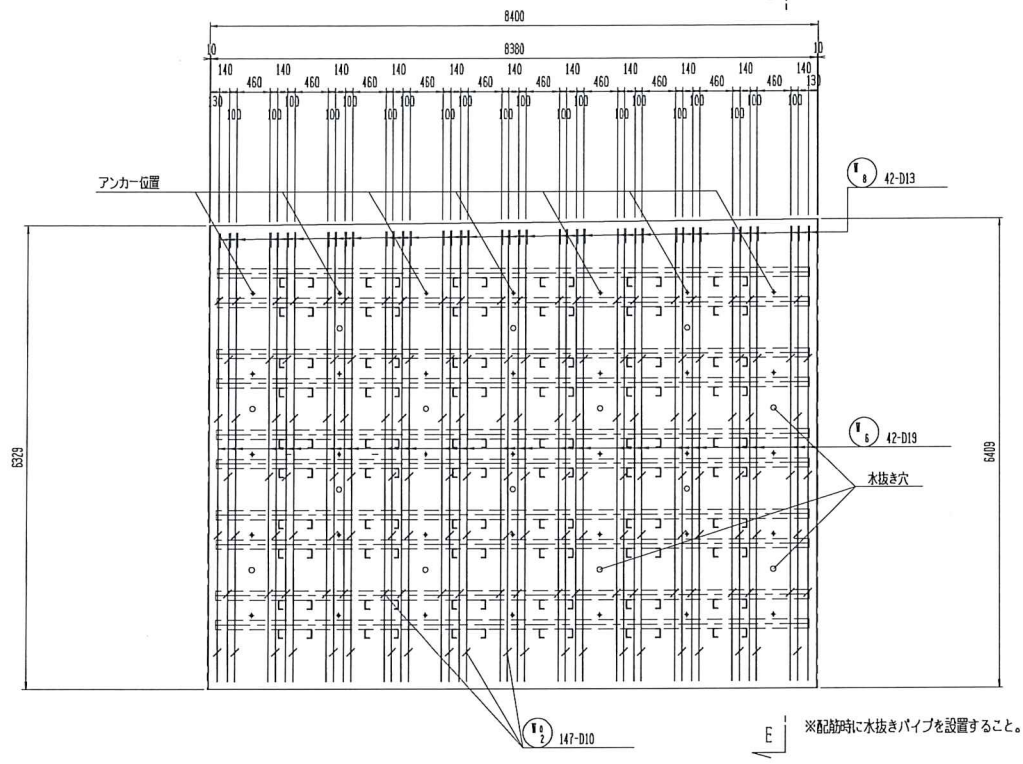




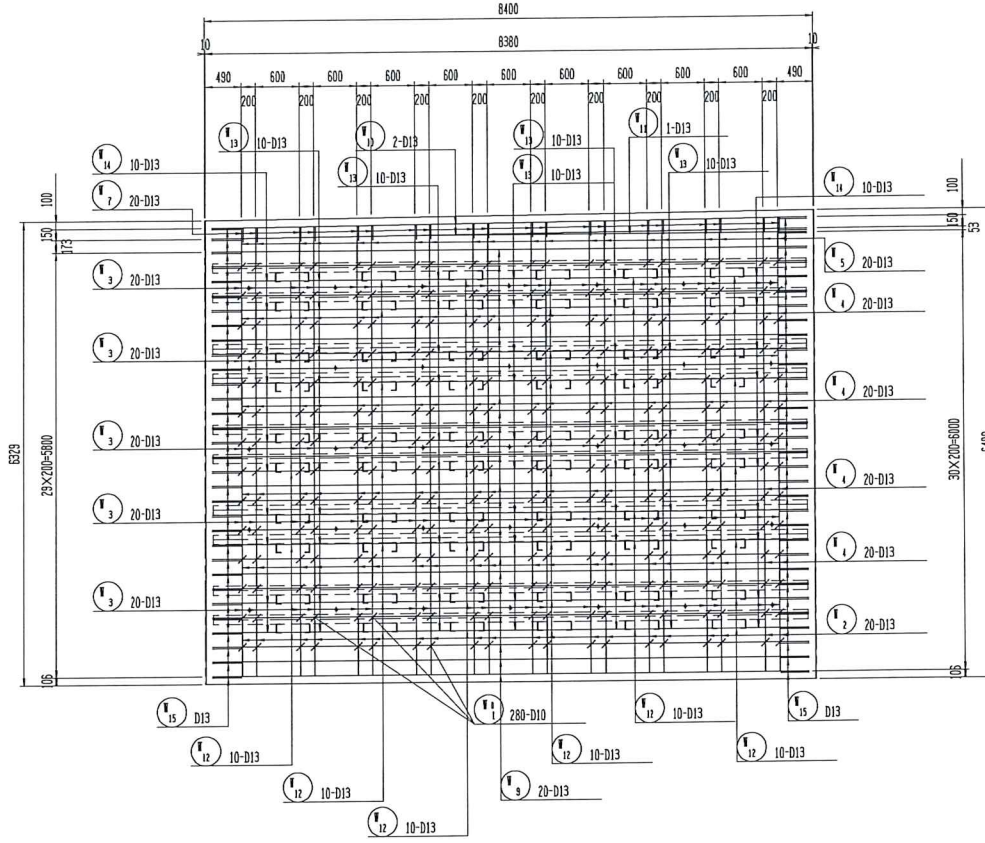
鉄筋表 (参考) 材質: SD345

符号	径	長さ (mm)	本数	1本当り質量 (kg)	質量 (kg)	摘要	
1	D13	6310	36	6.278	226.0	L (平均長)	
2	D13	1360	18	1.353	24.4	J (平均長)	
3	"	400	90	0.398	35.8	I	
4	"	700	72	0.697	50.2	I	
5	"	510	18	0.507	9.1	I (平均長)	
6	D19	6390	35	14.378	503.2	L (平均長)	
7	D13	680	18	0.677	12.2	I	
8	"	780	35	0.776	27.2	I	
9	"	7000	50	6.965	348.3	I	
10	"	7000	4	6.965	27.9	I	
11	"	460	50	0.458	22.9	I	
12	"	740	40	0.736	29.4	I	
13	"	870	20	0.866	17.3	I	
14	"	1210	84	1.204	77.1	I (平均長)	
15	D10	600	224	0.336	75.3	I (平均長)	
16	"	710	123	0.398	49.0	I (平均長)	
					D19	503.2	kg
					D13	907.8	kg
					D10	124.3	kg
					合計	1535.3	kg

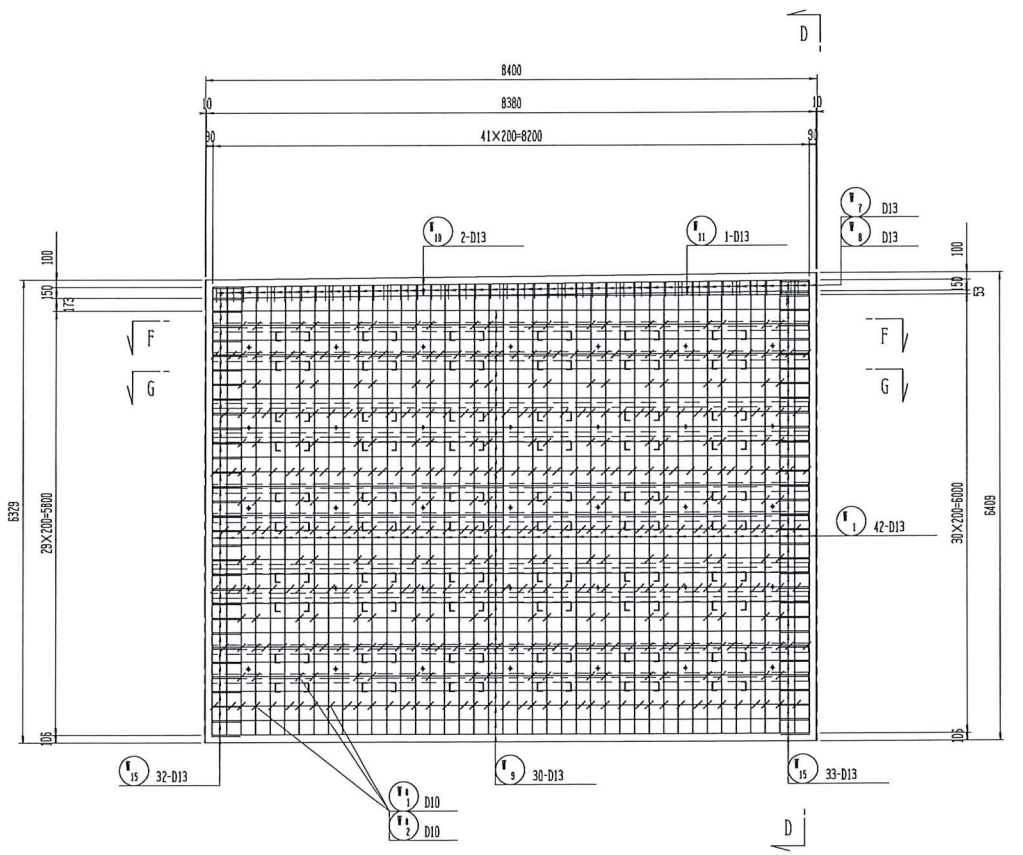
断面A-A
(背面)



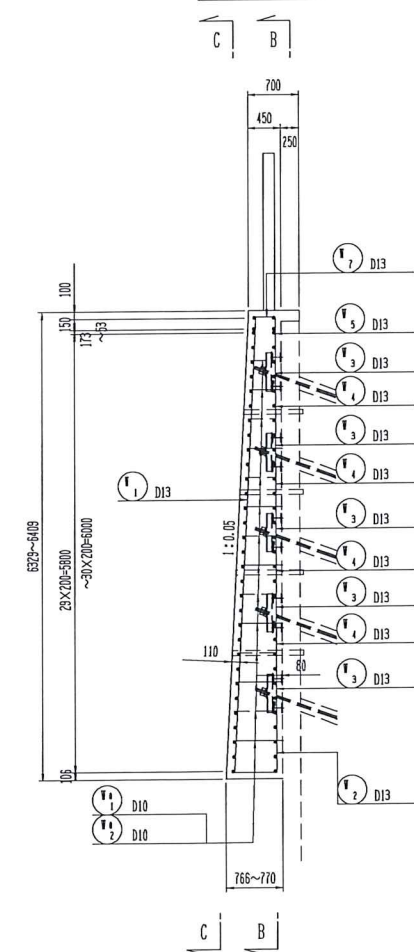
断面B-B
(背面)



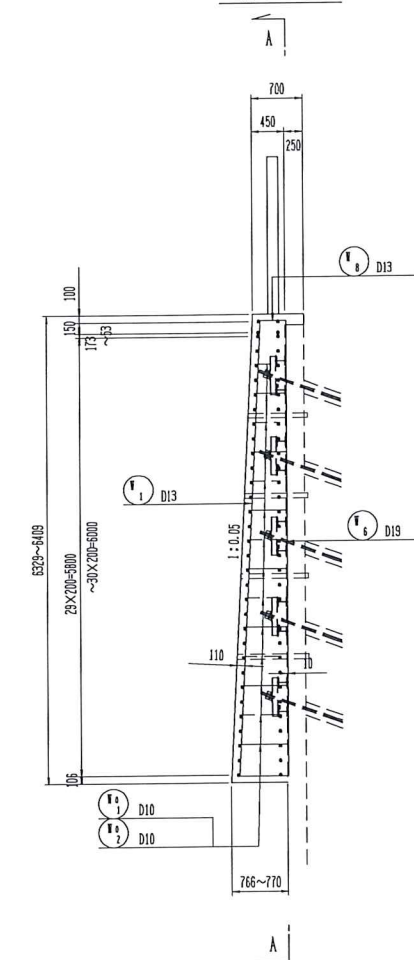
断面C-C
(前面)



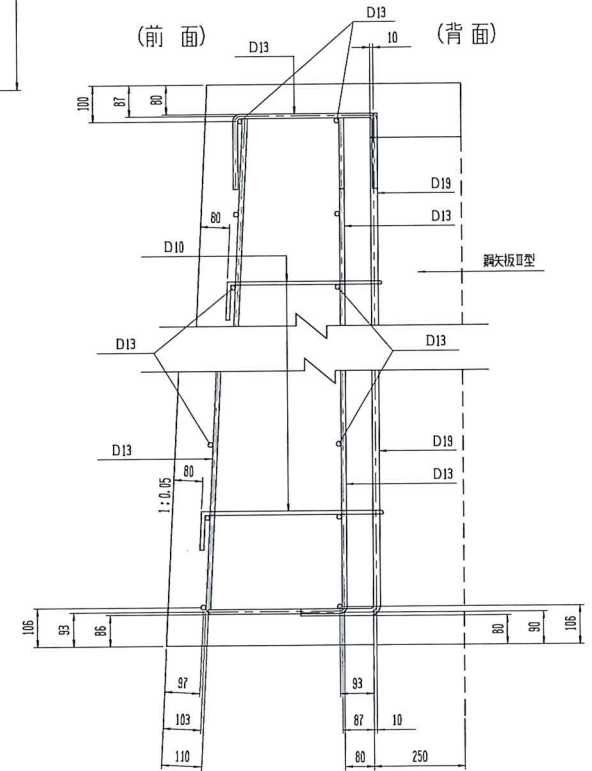
断面D-D

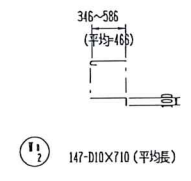
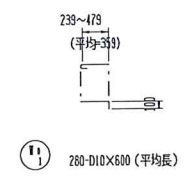
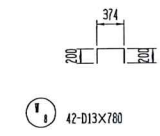
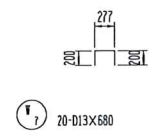
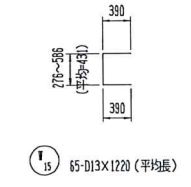
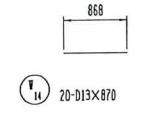
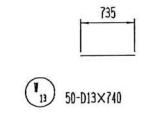
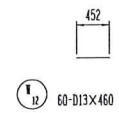
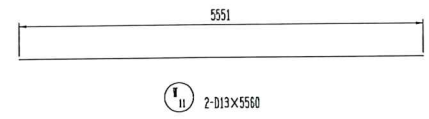
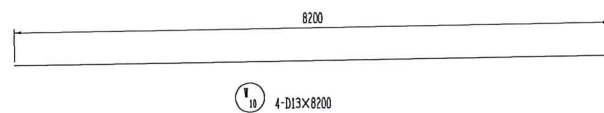
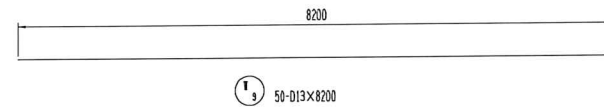
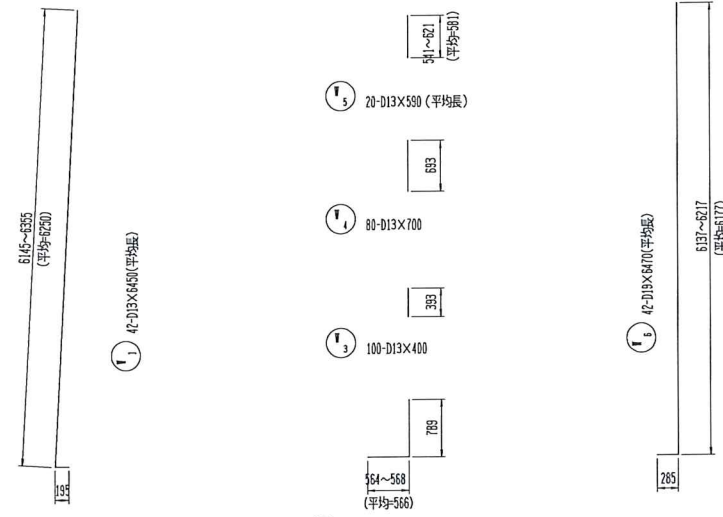
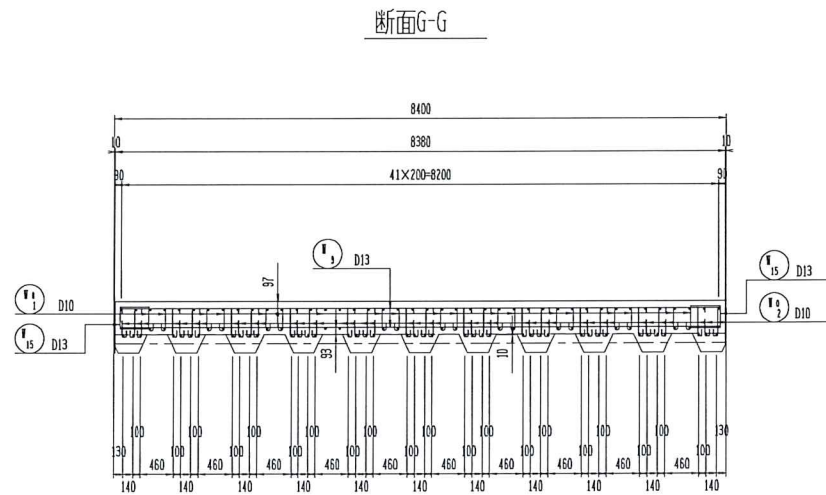
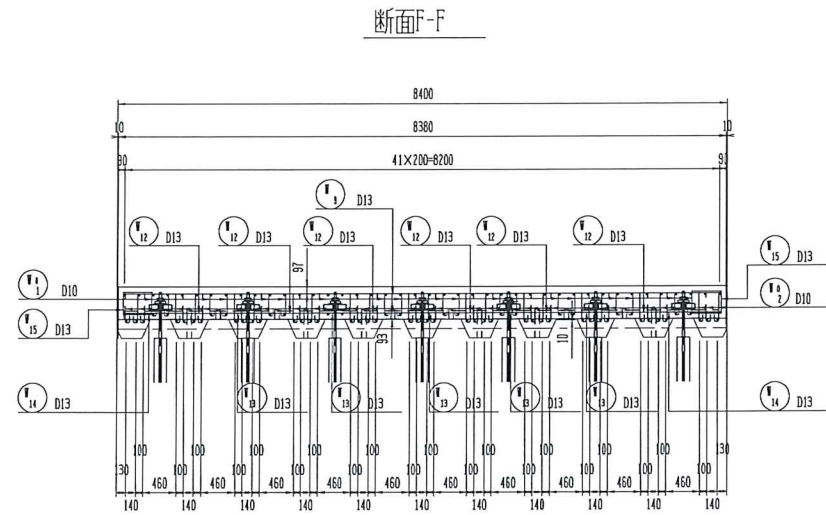


断面E-E



かぶり詳細図 S=1/10

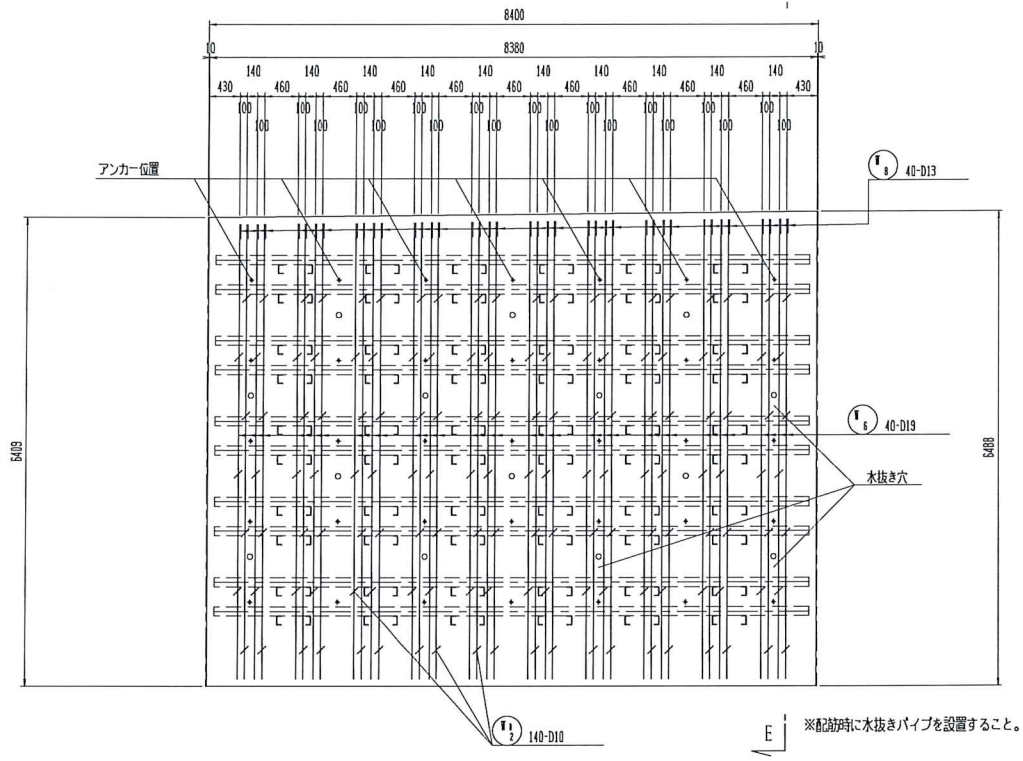




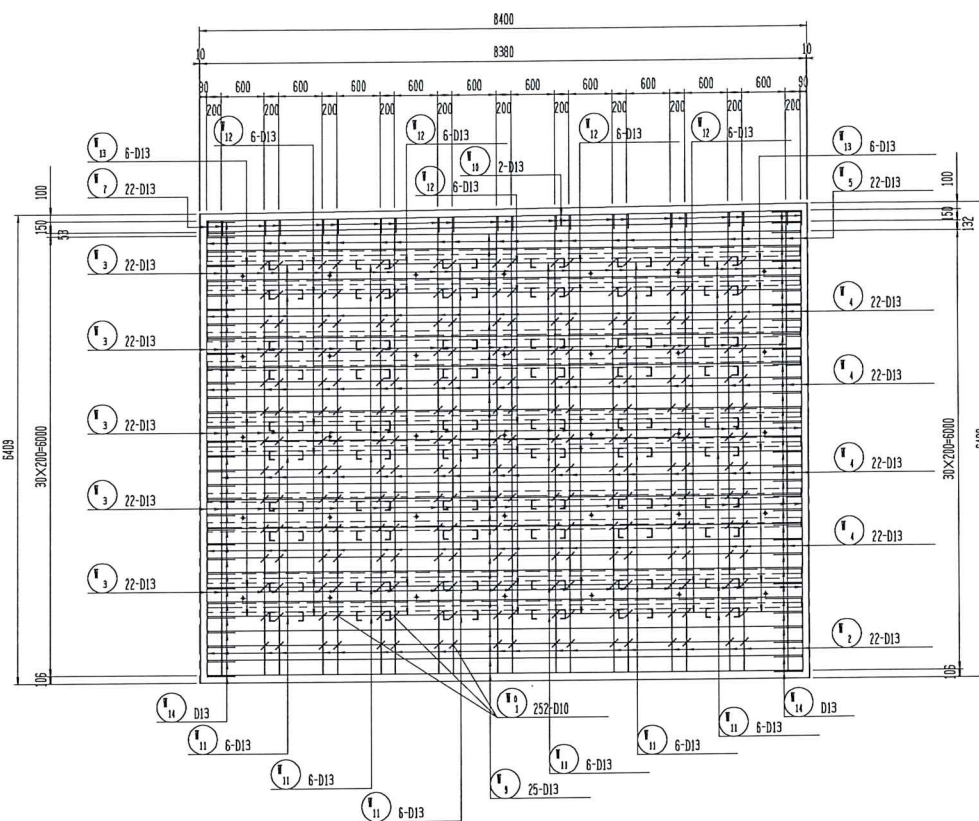
鉄筋表 (参考) 材質: SD345

符号	径	長さ (mm)	本数	1本当り質量(kg)	質量 (kg)	摘要
Ⅰ	D13	6450	42	6.418	269.6	└ (平均長)
Ⅱ	D13	1360	20	1.353	27.1	└ (平均長)
Ⅲ	〃	400	100	0.398	39.8	└
Ⅳ	〃	700	80	0.697	55.8	└
Ⅴ	〃	580	20	0.587	11.7	└ (平均長)
Ⅵ	D19	6470	42	14.558	611.4	└ (平均長)
Ⅶ	D13	680	20	0.677	13.5	└
Ⅷ	〃	780	42	0.776	32.6	└
Ⅷ'	〃	8200	50	8.159	408.0	└
Ⅹ	〃	8200	4	8.159	32.6	└
Ⅺ	〃	5560	2	5.532	11.1	└
Ⅻ	〃	460	60	0.458	27.5	└
Ⅼ	〃	740	50	0.736	36.8	└
Ⅽ	〃	870	20	0.866	17.3	└
Ⅾ	〃	1220	65	1.214	78.9	└ (平均長)
ⅰ	D10	600	280	0.336	94.1	└ (平均長)
ⅱ	〃	710	147	0.399	58.5	└ (平均長)
				D19	611.4	kg
				D13	1062.3	kg
				D10	152.6	kg
				合計	1826.3	kg

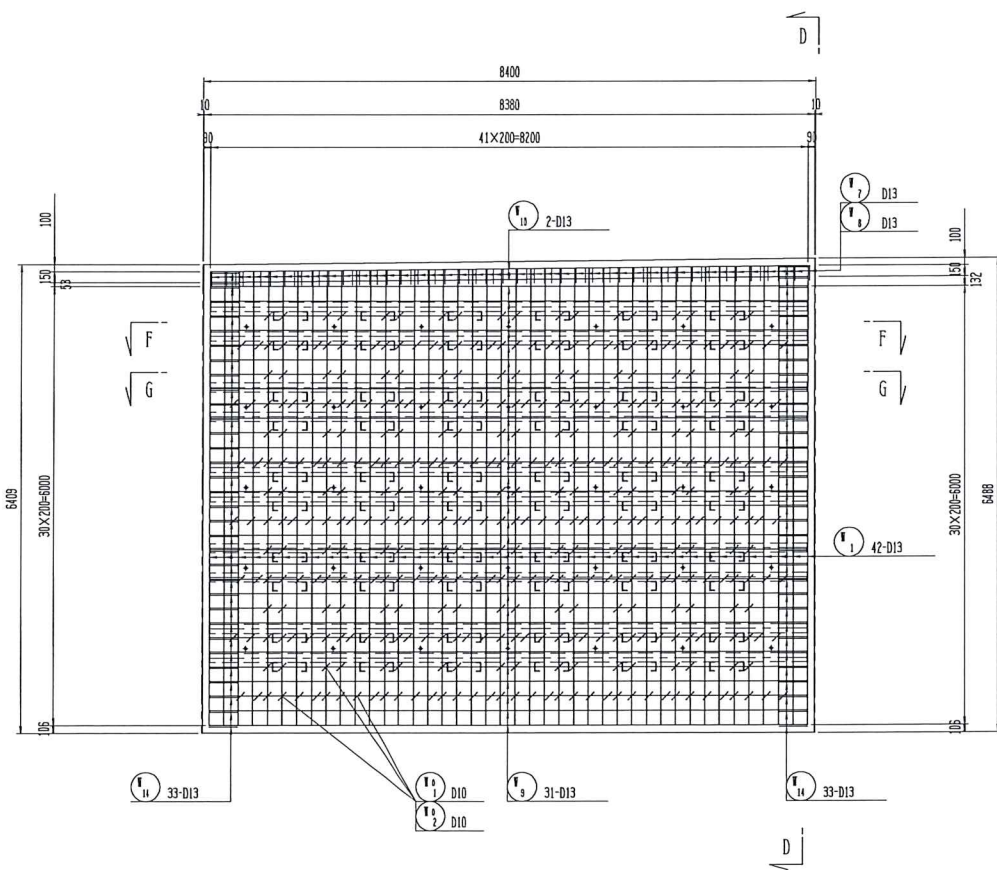
断面A-A
(背面)



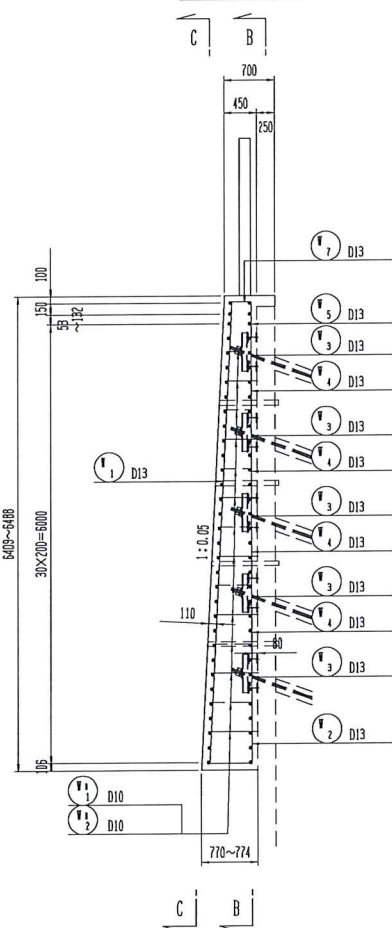
断面B-B
(背面)



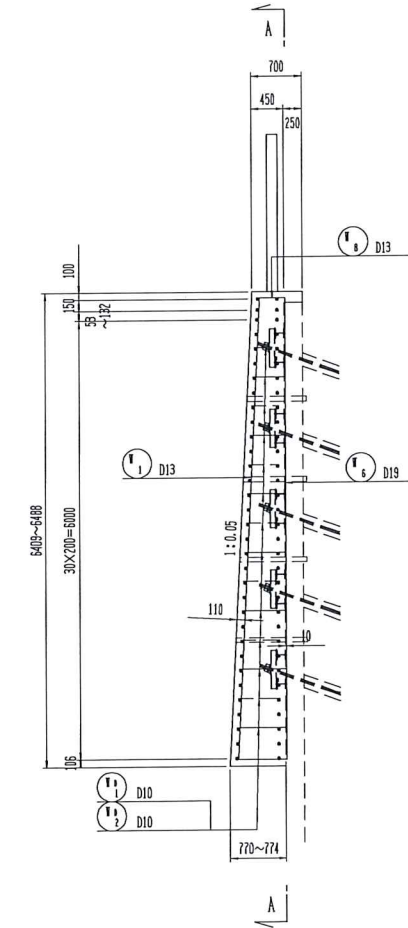
断面C-C
(前面)



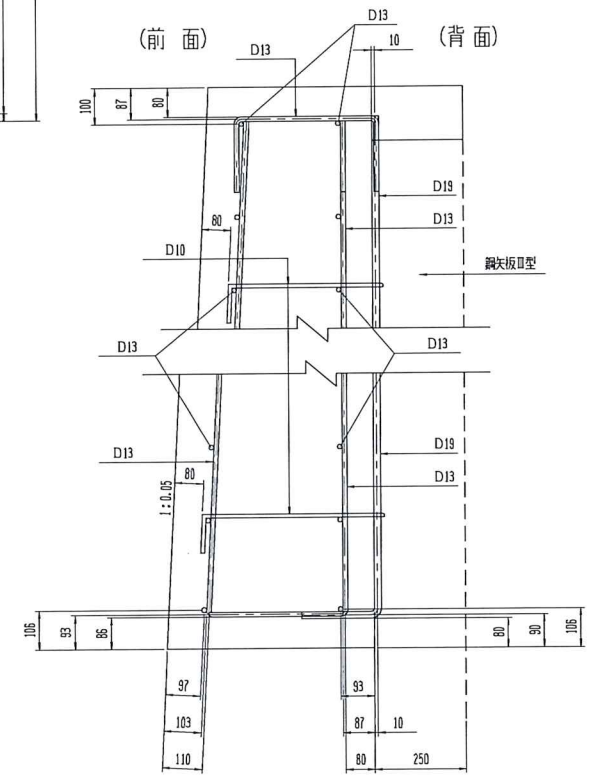
断面D-D



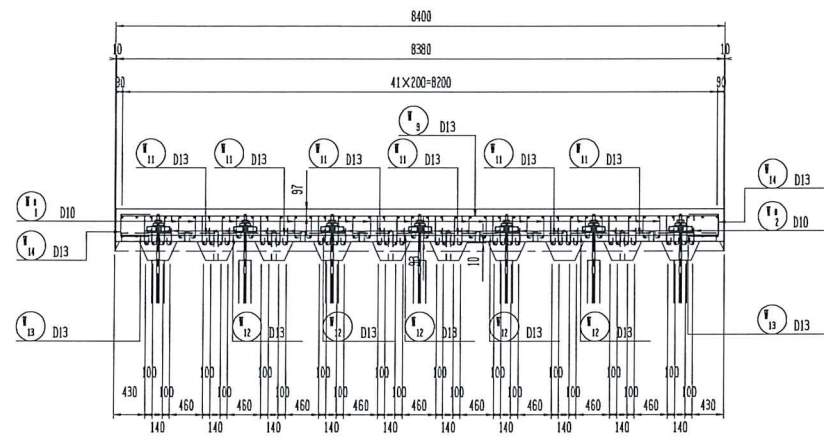
断面E-E



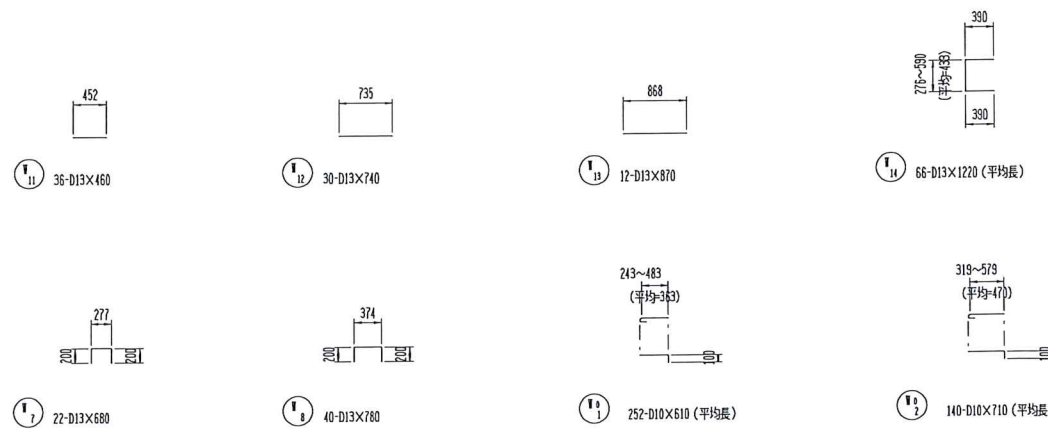
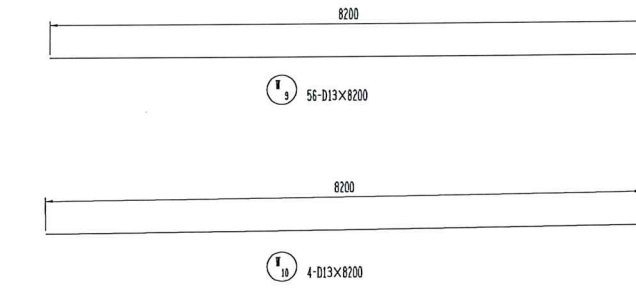
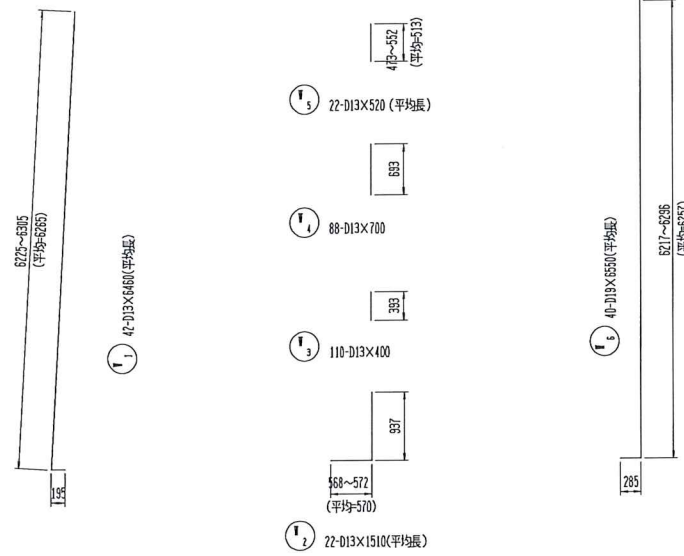
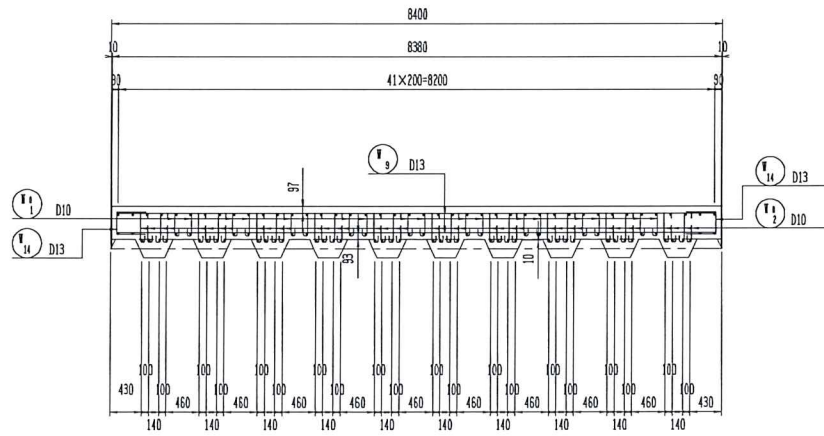
かぶり詳細図 S-1/10



断面F-F



断面G-G

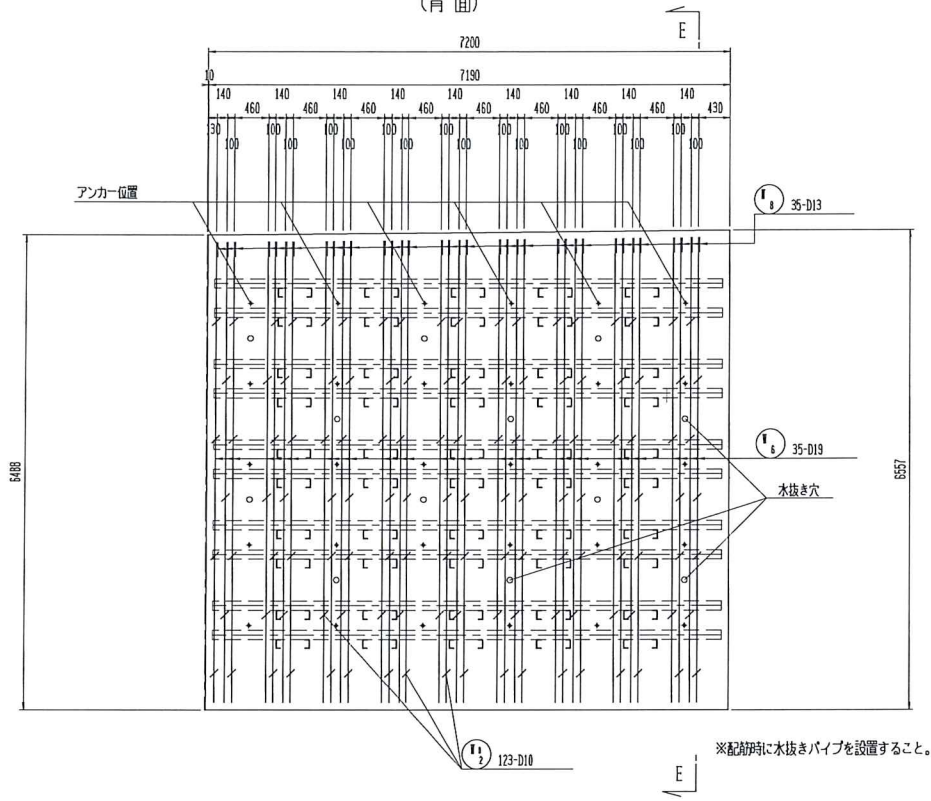


鉄筋表 (参考)

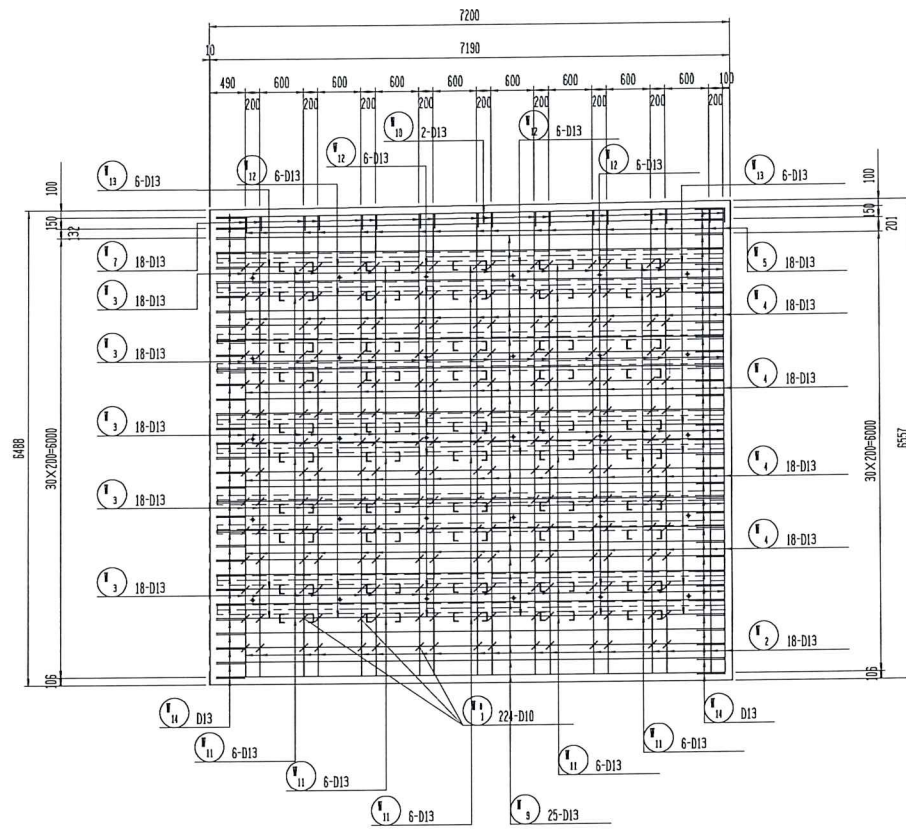
材質: SD345

符号	径	長さ (mm)	本数	1本当り質量(kg)	質量(kg)	摘要
Ⅰ	D13	6460	42	6.428	270.0	┌ (平均長)
Ⅱ	〃	1510	22	1.502	33.0	└ (平均長)
Ⅲ	〃	400	110	0.398	43.8	
Ⅳ	〃	700	88	0.697	61.3	
Ⅴ	〃	520	22	0.517	11.4	(平均長)
Ⅵ	D19	6550	40	14.738	589.5	┌ (平均長)
Ⅶ	D13	680	22	0.677	14.9	└
Ⅷ	〃	780	40	0.776	31.0	└
Ⅸ	〃	8200	56	8.159	456.9	—
Ⅹ	〃	8200	4	8.159	32.6	—
Ⅺ	〃	460	36	0.458	16.5	—
Ⅻ	〃	740	30	0.736	22.1	—
Ⅼ	〃	870	12	0.866	10.4	—
Ⅽ	〃	1220	66	1.214	80.1	└ (平均長)
ⅰ	D10	610	252	0.342	86.2	┌ (平均長)
ⅱ	〃	710	140	0.398	55.7	└ (平均長)
				D19	589.5	kg
				D13	1084.0	kg
				D10	141.9	kg
				合計	1815.4	kg

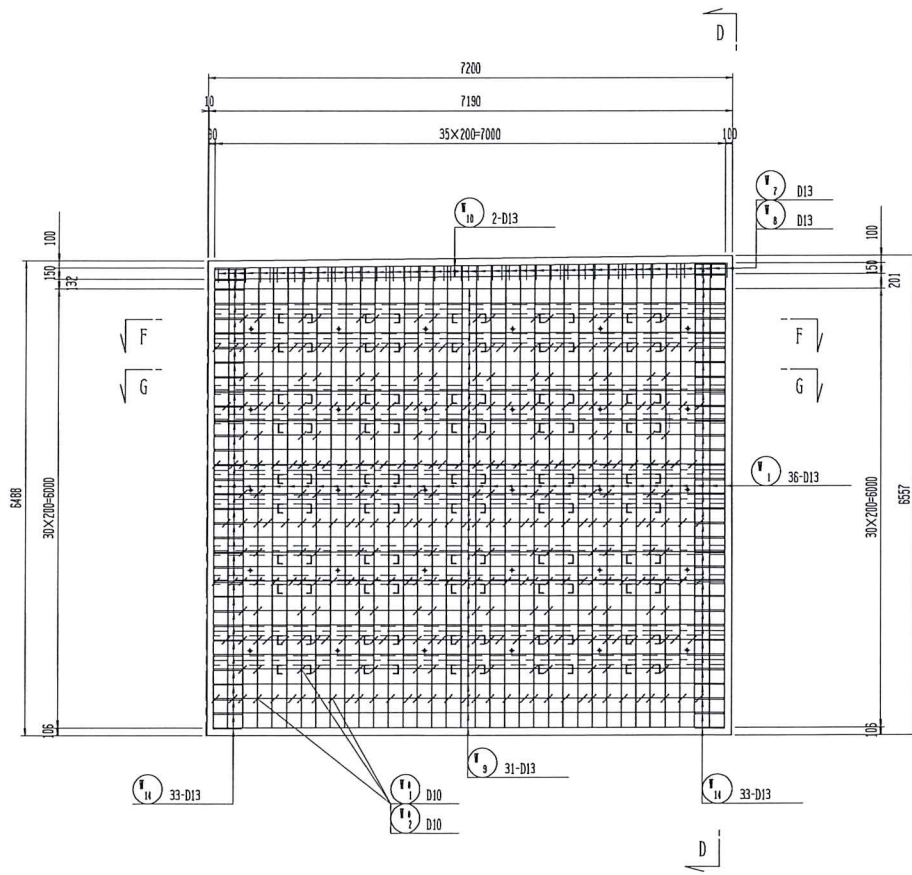
断面A-A
(背面)



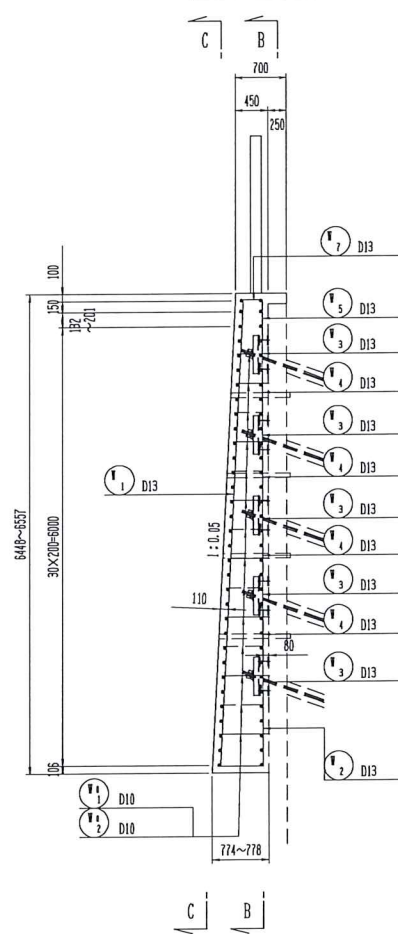
断面B-B
(背面)



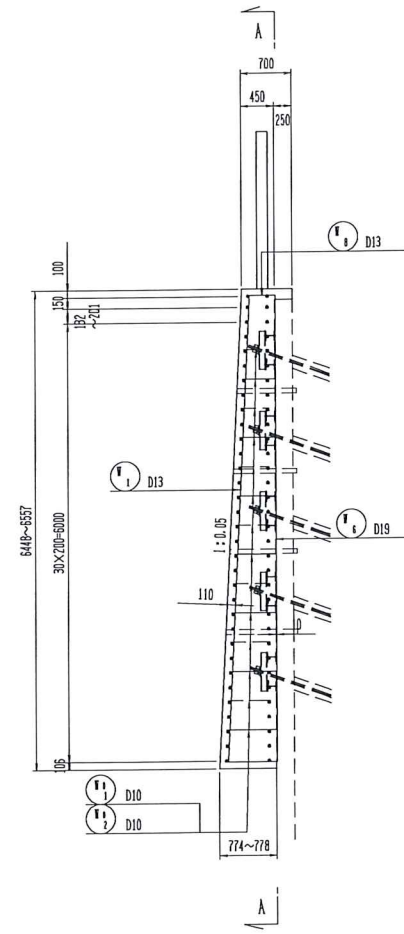
断面C-C
(前面)



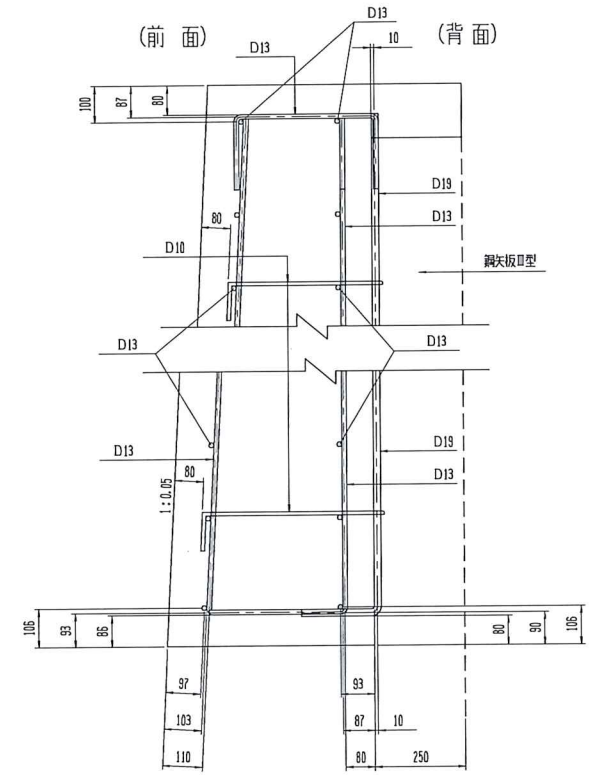
断面D-D

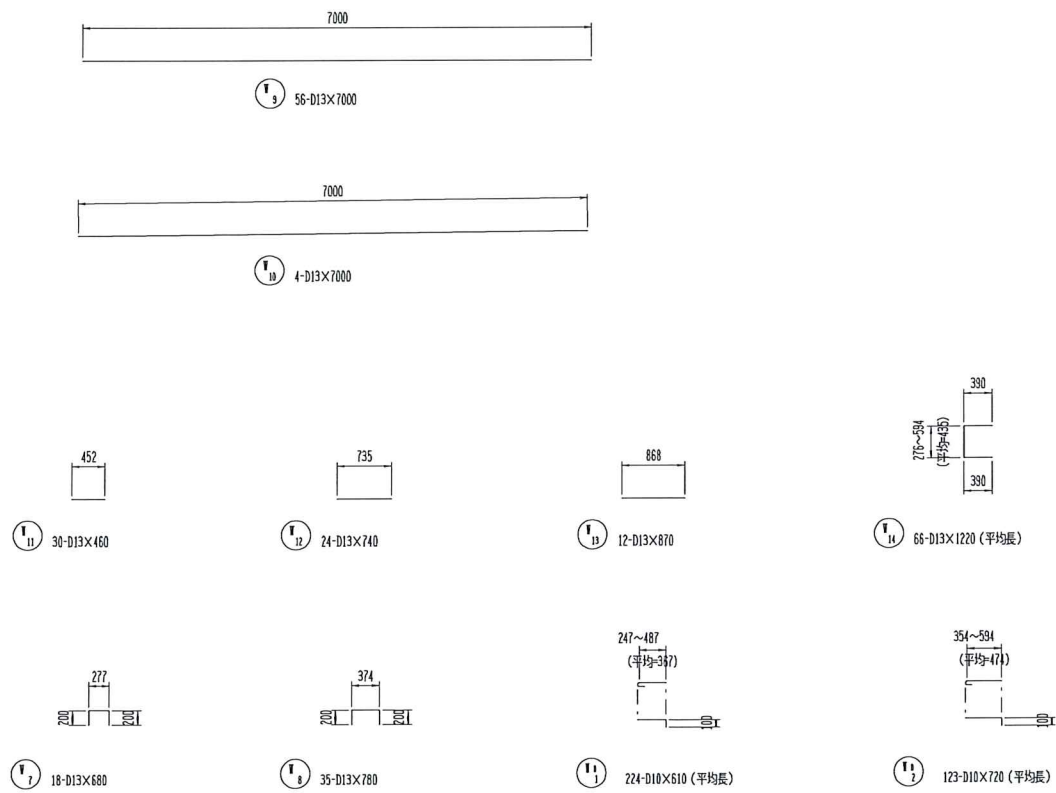
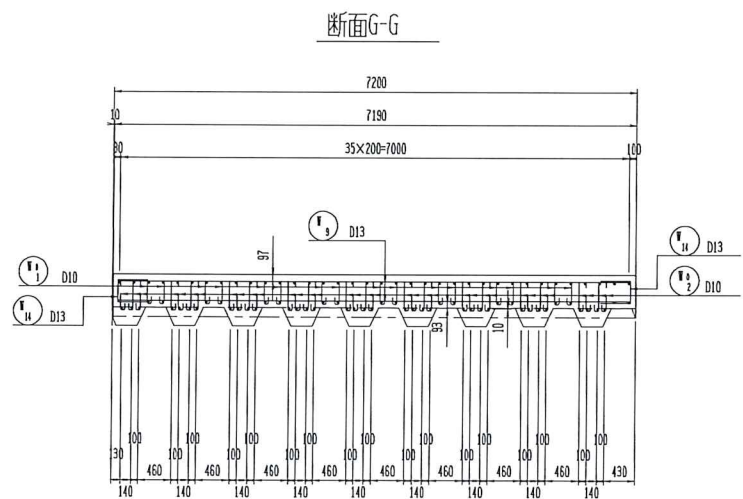
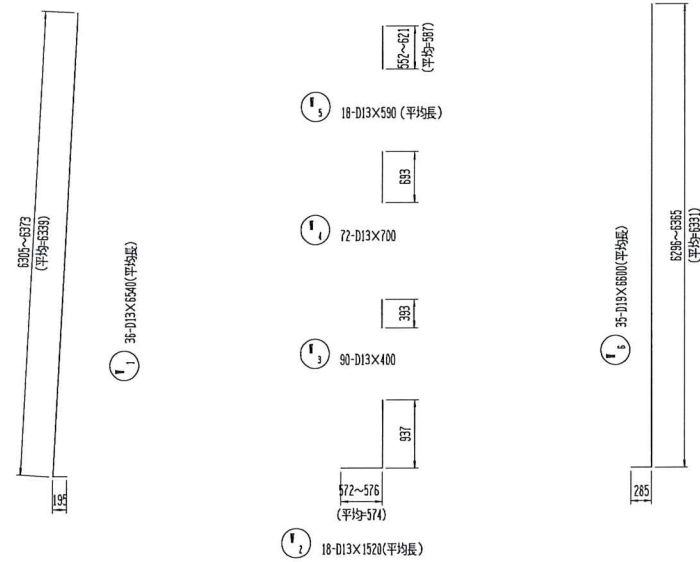
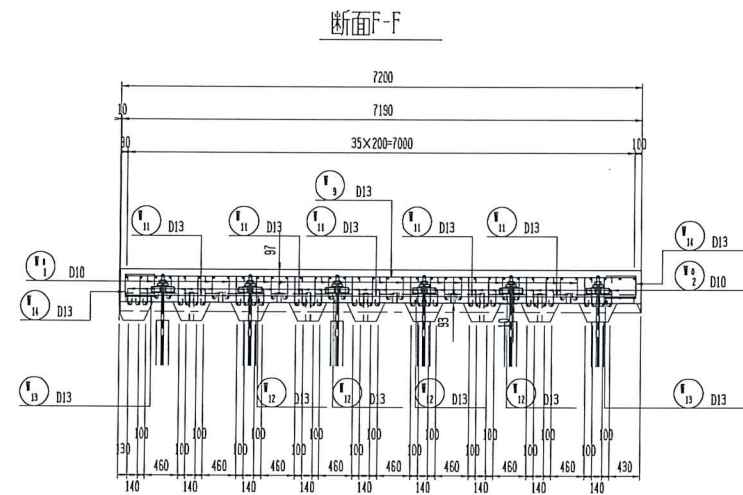


断面E-E



かぶり詳細図 S-1/10





鉄筋表(参考) 材質:SD345

符号	径	長さ(mm)	本数	1本当り質量(kg)	質量(kg)	摘要
1	D13	5540	36	6.507	234.3	L (平均長)
2	D13	1520	18	1.512	27.2	L (平均長)
3	"	400	90	0.398	35.8	L
4	"	700	72	0.687	50.2	L
5	"	590	18	0.587	10.6	L (平均長)
6	D19	6600	35	14.850	519.8	L (平均長)
7	D13	680	18	0.677	12.2	L
8	"	780	35	0.776	27.2	L
9	"	7000	56	6.365	390.0	L
10	"	7000	4	6.365	27.9	L
11	"	460	30	0.458	13.7	L
12	"	740	24	0.736	17.7	L
13	"	870	12	0.866	10.4	L
14	"	1220	65	1.214	80.1	L (平均長)
15	D10	610	224	0.342	76.6	L (平均長)
16	"	720	123	0.403	49.6	L (平均長)
				D19	519.8	kg
				D13	937.3	kg
				D10	126.2	kg
				合計	1583.3	kg